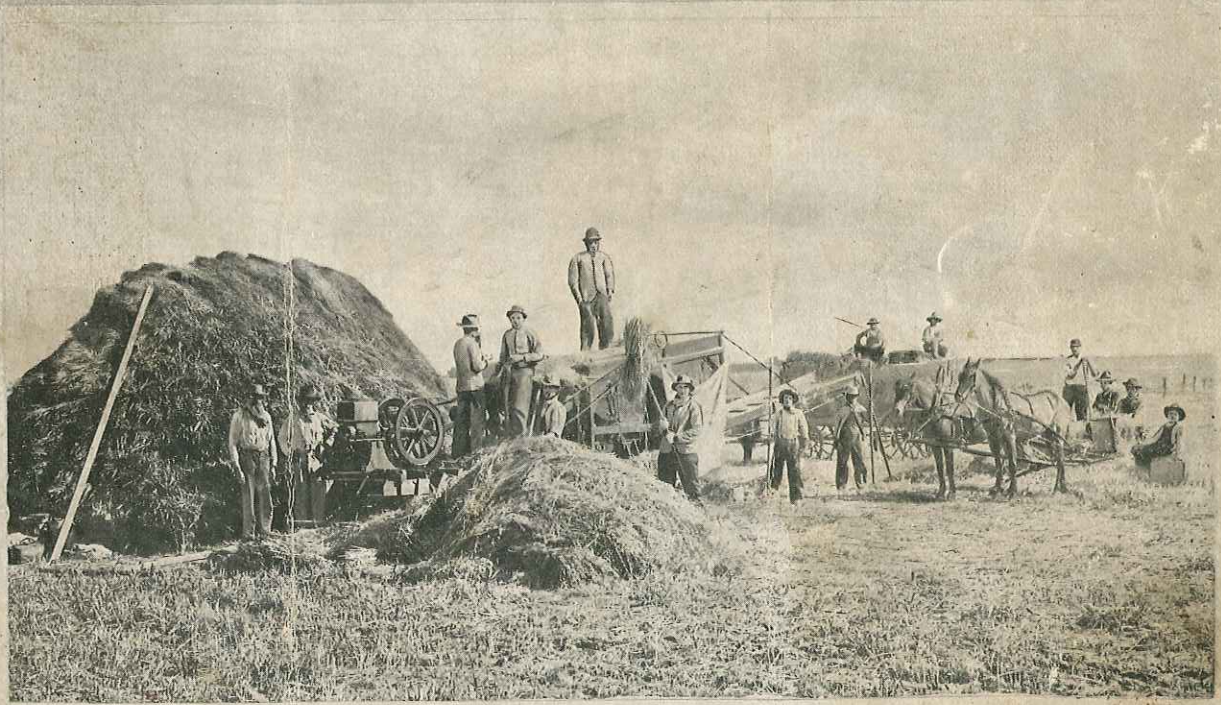


Fall 1912

GASOLINE ENGINES



SEARS, ROEBUCK AND CO.
CHICAGO

OUR GUARANTEE



SATISFACTION IS WHAT WE REALLY GUARANTEE.

If you are not entirely satisfied with any gasoline engine or outfit you buy from us you may return it and we will send back your money.

We guarantee the Economy Gasoline Engines to develop as much power and to be equal in material, construction and finish to any gasoline engine of the same horse power.

We guarantee to furnish repairs whenever needed and we will replace free at any time any part of an Economy Gasoline Engine that gives out on account of defect in material or workmanship.

We guarantee the Economy Engine to give you the service you have a right to expect—not one year, two years or even five years, but as long as the engine lasts; and if properly taken care of an Economy Gasoline Engine should last a natural lifetime.

Sixty Days' Trial

We will ship you any one of the engines or outfits shown in this catalog on sixty days' trial. You can try it on your own work for sixty days, you can compare it with any other engine in your neighborhood as to material, construction, simplicity, durability and power. If it is not equal in every way to any gasoline engine selling for twice the price we ask, you may return it and we will send back your money and any freight charges you have paid.

We do not offer you this sixty days' trial just to get your order; we expect you to take advantage of it to prove to your own satisfaction that the Economy is a *high grade* gasoline engine in every respect and that it will do all that we claim.

Don't buy a gasoline engine unless you can get it on trial, so that you can be sure that it is the engine best suited for your work. If you buy an Economy Engine it must satisfy you in every way. We leave it entirely to you to decide if the engine is the one you want. We protect you absolutely from an unsatisfactory purchase.

SEARS, ROEBUCK AND CO.

FACTS



WE OWN AND OPERATE one of the largest and best equipped gasoline engine factories in the country. We do not buy the Economy Engines; they are manufactured under the direct supervision of our own engineers.

The design of our engines is such that it reduces the number of parts to a minimum and produces an engine of *extreme simplicity* and highest efficiency, with no small or delicate parts to break and get out of order, and so compact that it can be easily handled.

We buy the best material on the market to put into our engines; this material is worked up by skilled mechanics, using the most modern labor saving machinery obtainable.

Each and every part is interchangeable, which means that in case of accident repairs can be furnished that will fit, and that anyone who can use a monkey wrench and screwdriver can easily make repairs.

Every piece of material entering into the construction of Economy Gasoline Engines is thoroughly tested and carefully inspected, and the engine itself is given a thorough test and made to pull more than its rated horse power before it is shipped.

The fuel consumption is as low and the appearance as fine as that of any engine made, regardless of price.

The Economy Engine is sold at a price representing the actual factory cost with one profit added, about one-half the price usually asked for similar high grade engines, and there is no better engine made than the Economy, regardless of price.

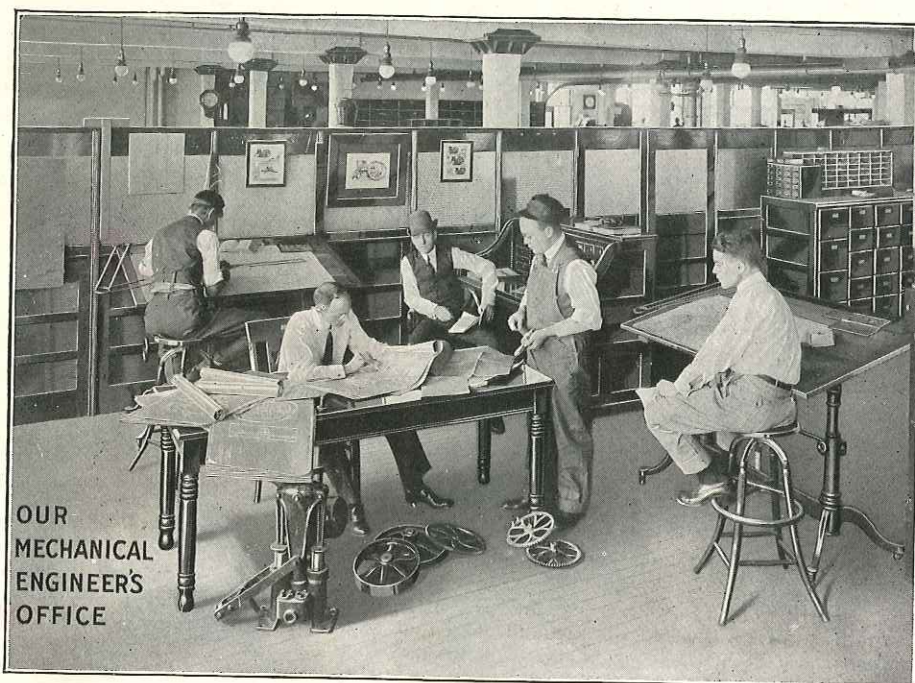
It is built to give service for years; it is built to satisfy our customers and not for profit alone; it is built to make a reputation for itself as well as for us.

It is sold in the most economical manner, direct from the factory to the user with the lowest possible handling expense at the lowest possible price at which a high grade engine can be sold; furthermore it is sold by a house that has a reputation unsurpassed for fair, liberal and honest dealing.

SEARS, ROEBUCK AND CO.

121k.1.7.22.12.5

Let Our Mechanical Experts Advise You



YOU WILL PAY FOR A GASOLINE ENGINE this year whether you buy one or not, because without a gasoline engine you waste far more time and money in a single year than the price we ask for a *high grade* gasoline engine that will do your work.

It is easier to order a gasoline engine from us than from an agent or dealer, because in selling thousands of gasoline engines a year our mechanical engineers and field experts have a greater opportunity to gain the experience necessary to tell you just what engine will do your work to the best advantage and at the least expense.

Write and tell us what machines you have or those you would like to buy that could be run with a gasoline engine and our experts will tell you what size engine to get in order to obtain the best results at the least expense. They will give you a list of all machines you want, together with any equipment you will need, and quote you prices a great deal lower than you can possibly secure elsewhere.

If you want an engine to grind feed, saw wood, cut ensilage for the silo, run a thresher, hay press, pump water, run the cream separator, washing machine, churn, or any other machinery, just write and tell us what you want to do, and our experts will be glad to tell you how to do it.

This information is absolutely free, we make no charge for it, and you are not obliged to buy if we make you a quotation. Don't hesitate to write us for any information you may want in this line, as we want to help you all we can to secure an outfit that will reduce the cost of handling the work on your farm.

ADDRESS, DEPT. 47, MECHANICAL ENGINEERS.

SEARS, ROEBUCK AND CO., CHICAGO, ILLINOIS

Our Terms and How to Order

It Is Easy to Order a Gasoline Engine From Us

SEND US YOUR ORDER for the engine you select and enclose our price either in the form of an express or postoffice money order, bank draft, or currency in a registered letter. If you have a checking account at a bank you may send us your personal check. On receipt of your order we will make shipment immediately. After the engine reaches you, you have *sixty days* to try it before you decide to keep it.

If you are not entirely satisfied, if you do not think you have saved money, if you don't think the Economy is as good as any engine you could have bought, regardless of price, you may ship the engine back to us and we will send back your money, together with any freight charges you have paid, so that you will not be out one cent for your trial.

Nearly all of our customers send us full remittance with their orders, as they know they can rely on our word and know we will protect them absolutely from an unsatisfactory purchase. Your money is just as safe with us as it would be in your home bank, as we are fully as responsible, perhaps financially stronger than your banker.

We Guarantee Safe Delivery to Your Station

Great care is taken in shipping our engines. They are well crated and packed, and we guarantee that the engine you order will reach you in the same perfect condition as when it left our factory. If by any chance it should be damaged through careless or rough handling or by accident, we will repair or replace the damaged part free of charge or furnish you a complete new engine at our expense, so that you run absolutely no risk of loss through careless handling on the part of the railroad company.

Freight Charges

The freight charges on any gasoline engine will amount to very little compared with the saving you will make by ordering the engine from us, and if you order an engine to be shipped from a warehouse near you, the freight charges will amount to very little. In any event, regardless of the freight charges you pay, we guarantee you will make a very large saving over what you would have to pay for as good an engine purchased from any other concern.

To find out just what the freight will be on an engine to your town, refer to page 32, where we give a table of freight charges showing the rate to several towns in each state. Pick out a town which is near you and use this rate as a basis for the freight to your town, which will give you a very good idea of what the charges will be.

If you want to know exactly what the freight charges will be, send us a postal card or letter, giving us the catalog number of the engine you want and where you want it shipped, and we will write you by return mail and tell you just what the freight charges will be.

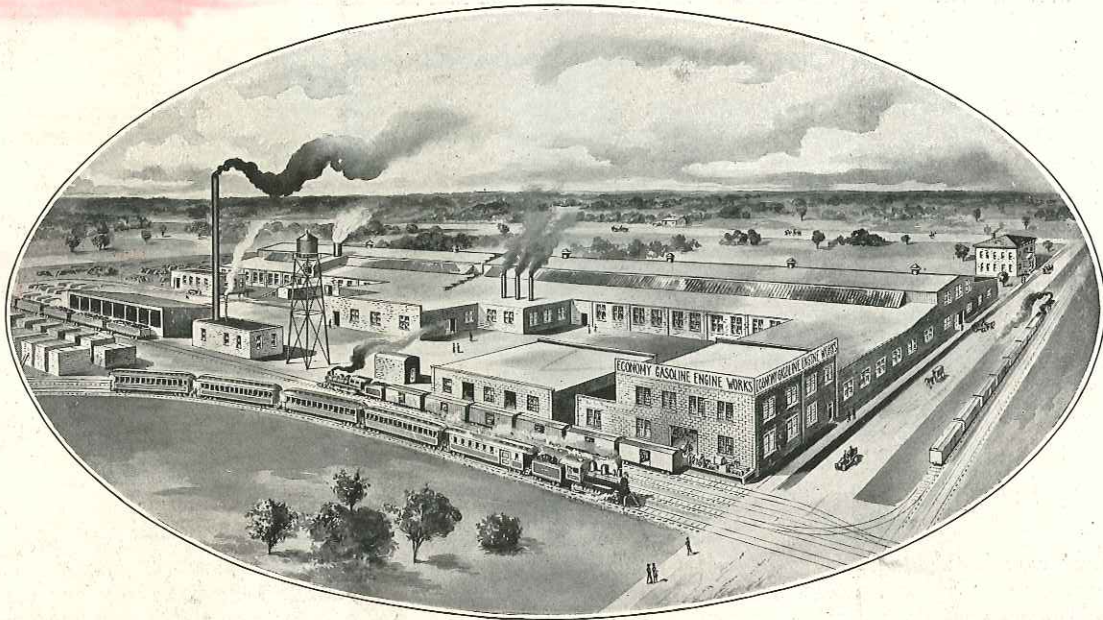
You Can Always Obtain Repairs for Your Engine

We can always furnish repairs for your engine, no matter how long you have it, as we keep a record at our factory of every engine shipped out and will be able to furnish you repairs at a very small cost, ten, fifteen or even twenty-five years from the date you purchased it.

All parts of the Economy Engines are standard. By this we mean every part is made like every other part of the same kind. This not only means that we can put an engine together accurately and obtain perfect results, but it means that you can secure repairs or extra parts at any time and that they will fit perfectly and without any changes.

SEARS, ROEBUCK AND CO., CHICAGO, ILLINOIS

We Own the Factory



The Lowest Prices Ever Made on High Grade Gasoline Engines

First class, high grade gasoline engines at prices far below what you would pay elsewhere, and they are backed by the strongest guarantee ever written. Shipped on sixty days' trial. Satisfaction guaranteed.

THERE HAS BEEN A GREAT IMPROVEMENT in gasoline engines within the last five years and today they are the most valuable machines used on the farm. Every up to date farmer and shop owner has long realized that a gasoline engine simple in construction, easy to operate and economical in the use of fuel, one that would run with very little attention, would be a most valuable machine.

Almost any gasoline engine will give satisfactory service for a year or so, but the farmer wants an engine that will run year in and year out; an engine that is standard and for which he can buy repairs as long as they are needed. He wants an engine backed by a guarantee that will protect him from loss ten or twenty years from date of sale as well as a few months after the purchase.

We are manufacturing just such an engine in our new modern gasoline engine factory at Sparta, Michigan, an engine made particularly to meet the demands of the farm and the small shop. These engines are made in large quantities on high grade machines by skilled mechanics, according to the latest improved methods, and on account of our system of manufacturing and the high grade machines used we are able to manufacture a *high grade engine* at half the usual cost and we are selling these *high grade engines* at a much lower price than any other high grade gasoline engine has been sold for before.

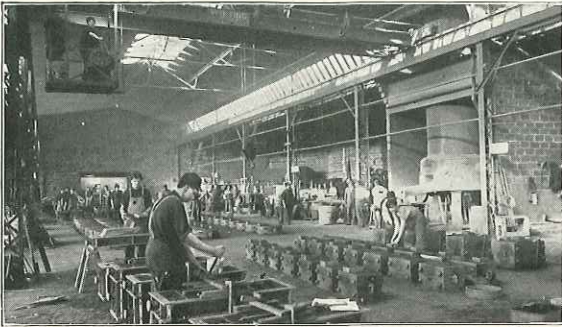
Don't let anyone persuade you that you have to pay a big price for a high grade engine. High prices represent expensive methods of manufacturing and large profits to manufacturer, agent or dealer.

Buy an Economy Gasoline Engine on our sixty days' trial plan and convince yourself that it is as good as any engine made and put the agent's or dealer's profit in your own pocket.

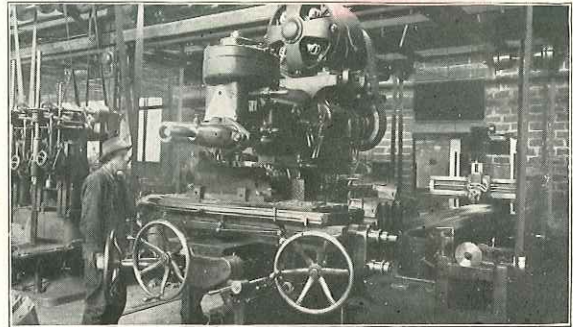
SEARS, ROEBUCK AND CO., CHICAGO, ILLINOIS

WWW.HerculesEngines.com

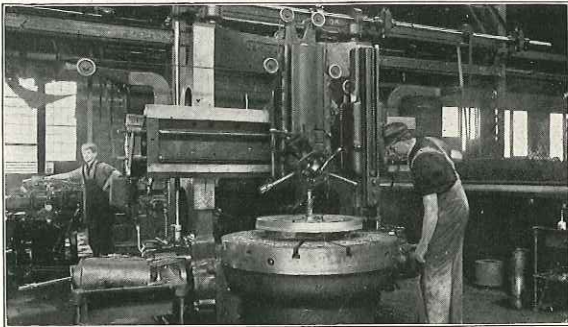
Pictures of Our Factory



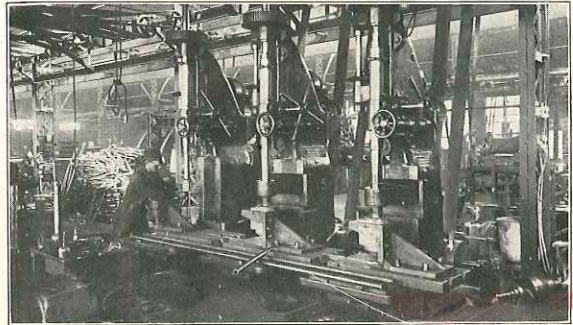
The grade of iron we use in the Economy Engines insures long life.



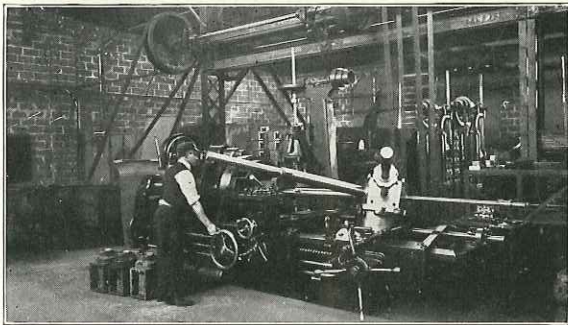
High Grade Machines mean first class workmanship and low cost to build.



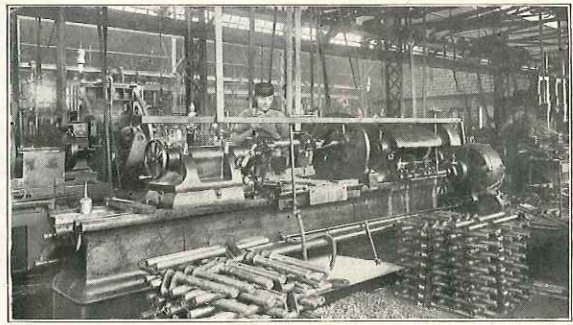
Every fly wheel is carefully balanced to prevent vibration, every Economy runs true.



Boring cylinders. A close fitting piston and cylinder means good compression.



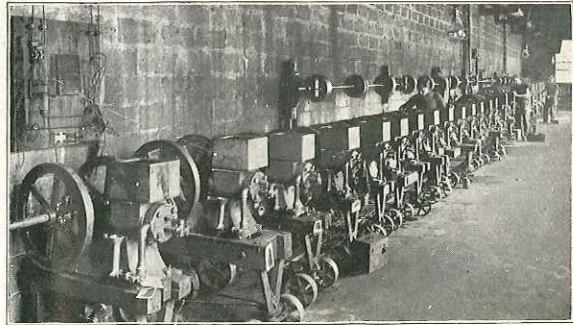
One of the large lathes that enable us to make all parts interchangeable.



Turning crank shafts from drop forged steel, the same as used on High Grade Automobiles.



Putting the engines together. Every part fits without any changes.

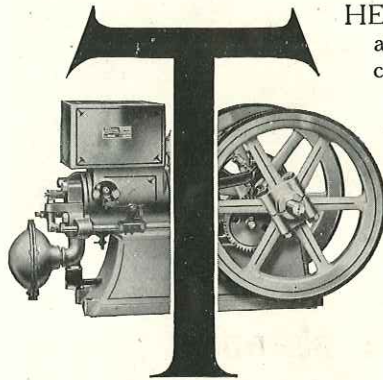


We test every engine thoroughly so we know it is right when you get it.

SEARS, ROEBUCK AND CO., CHICAGO, ILLINOIS

How the Economy Gasoline Engines Are Made

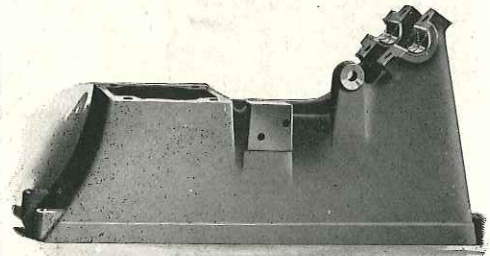
Every Economy Gasoline Engine Is Standard; All Parts Are Interchangeable. Repairs Will Fit Perfectly and Can Be Secured on Short Notice and at Small Cost. We Guarantee Satisfaction.



THE ECONOMY ENGINES are constructed of the best material we can buy, and if properly taken care of should last a lifetime. Every part of the engine is carefully inspected before it is put in place. It must fit perfectly and without any changes. Every part of an Economy Engine is standard. By standard we mean that every piece is like every other piece of the same kind, without even one-thousandth of an inch variation where that degree of accuracy is necessary. All parts are interchangeable and may be replaced without any changes or the use of any special tools, which means a great saving in time and expense in replacing worn parts. We keep a complete record of every engine at our factory, so that if you ever want any repairs we know just what engine you have and just what to send you. We pay particular attention to all orders for repairs and see that they are shipped the next day after the order reaches us. If you are in a particular hurry for repairs you may telegraph the order and we will see that the repairs are shipped the same day your telegram is received. This insures you against any delays and will save you loss of time on an important job.

THE BASE

The base for the Economy Gasoline Engine is cast of the best grade of gray iron. It is made of proper proportions to withstand the impulses of the engine and to give the best results. It will last a lifetime. The main bearings are set on an angle and are particularly long, insuring long life and even lubrication to the bearings. All parts of the base are machined on a large milling machine at one operation, thus doing the work economically as well as accurately. Every base is machined just like every other base for the same horse power engine, so that all parts are interchangeable and will fit without any changes.



THE BASE.

FROSTPROOF WATER COOLER

We use a water hopper on the Economy Gasoline Engine for cooling, as it keeps the cylinder at just the right temperature to give the best results, and in case the water freezes there is very little danger of any damage to the cylinder, but as an additional precaution we have provided a drain cock at the bottom of the cylinder for draining the water in cold weather.

The cylinder of a gasoline engine when running should have a temperature of from 175 to 190 degrees Fahrenheit and if the temperature rises above this point you will get even better results. If you keep the cylinder too cool you will not get the greatest power from your engine. The water hopper is of just the right size and it takes but a few buckets of water a day to keep the cylinder at the right temperature. The care and attention needed for an outfit of this kind is a great deal less than the tank cooled engine and we guarantee the Economy to run as well under a heavy load as any tank cooled engine made. Ninety-nine per cent of the engines being manufactured today have water hoppers, which demonstrates the fact that they are vastly superior for general purposes.

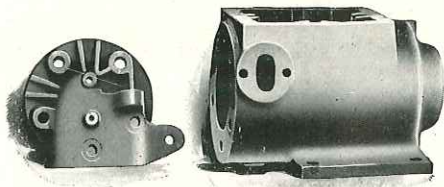
THE CYLINDER

The cylinders are cast of close grain gray iron. They are separate from the base and water hopper and can be easily replaced. Each cylinder is made exactly like every other cylinder for the same horse power engine, insuring a new cylinder to fit perfectly and without any changes. Each cylinder is fitted with drain cock at the bottom to let out the water, which prevents freezing in the winter time and makes the engine absolutely frostproof. Each cylinder is bored and reamed with extreme care so as to insure perfect compression and even lubrication.

SEARS, ROEBUCK AND CO., CHICAGO, ILLINOIS

- 6 -

WWW.HerculesEngines.com



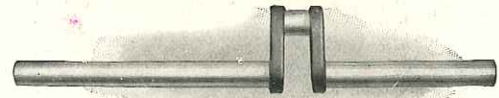
CYLINDER AND HEAD.

THE CYLINDER HEAD

The cylinder head is made of the best grade gray iron and is fastened to the cylinder with five bolts, the joint being made secure with the best grade of asbestos. The intake and exhaust valves are located in the cylinder head and are of the proper size to give the best results. They are controlled by special tempered springs; the intake valve is operated by the suction of the piston, the exhaust valve by the cam gear, which insures the valves opening and closing at the right time.

DROP FORGED CRANK SHAFT

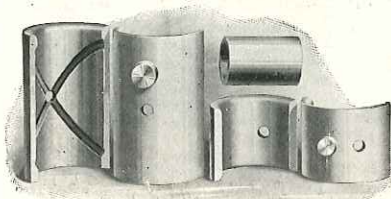
The Economy crank shaft is drop forged from the same steel and in the same manner as the shafts for the highest grade automobiles. We furnish a finished shaft with forged cheeks that is vastly superior to the milled shaft in which the stiffening effect is lost when the cheeks are machined. Each shaft is finished within one-thousandth of an inch and has the standard key way.



CRANK SHAFT.

DIE CAST BABBITT BEARINGS

The bearings used on the Economy Engines are die cast from genuine babbitt. The grade we use is that used on all high grade engines and automobiles. All bearings are removable and may be replaced when worn out, and are so arranged that you can take up the wear. The main bearings are set on an angle and are provided with oil grooves, as shown in the illustration, insuring long life and even lubrication.



BEARINGS.

Babbitt is much more satisfactory for bearings than bronze as it takes less lubrication, and if you ever forget to oil the engine and the bearings run hot, the babbitt melts and can be replaced for a few cents where the bronze would score and cut the crank shaft and you would have to buy an expensive shaft as well as new bearings.

THE PISTON AND RINGS

The piston is made of close grain gray iron turned to size and then ground to a perfect fit; the rings are turned and ground and are accurately fitted, insuring perfect compression. The piston pin is steel, case hardened, and is fastened with a set screw so it cannot work loose.



PISTON AND RINGS.

THE CONNECTING ROD

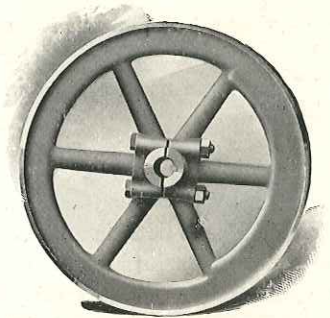
The connecting rod is of the I beam type, made of cast steel and we have never known one to break. The crank pin bearings are die cast, both of which can be removed and replaced at small cost and with very little trouble, and provision is made for taking up wear. We use a cast bushing for the piston pin, automatically oiled, so that it will cause you absolutely no trouble and it will wear almost forever.



CONNECTING ROD.

THE FLY WHEELS

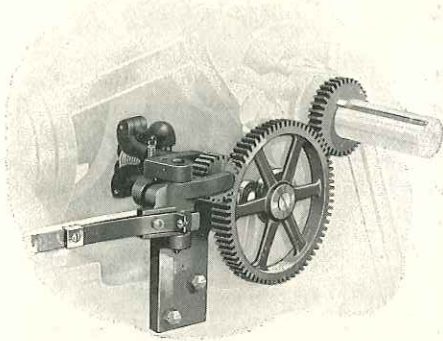
The fly wheels, made of cast iron, are of the proper weight and are counter-balanced so as to carry a load at all speeds with the least vibration. Each wheel is turned and is securely fastened to the crank shaft by key and bolts, making it impossible for the wheels to work loose, yet they are very easily removed.



FLY WHEEL.

SEARS, ROEBUCK AND CO., CHICAGO, ILLINOIS

THE GOVERNOR

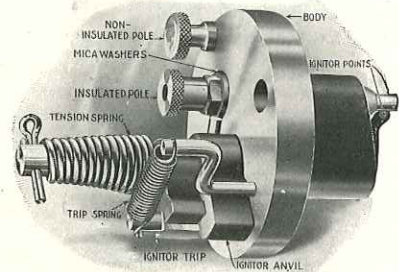


THE GOVERNOR.

The governor on the Economy Gasoline Engine is very simple; it is of the hit and miss type, very sensitive and keeps the engine at a steady speed. When the engine runs beyond its regular speed the governor balls widen their circuit, causing the lever on the governor to catch the rod that runs along the side of the engine, which holds open the exhaust valve, shuts off the gasoline and stops the spark, in this way saving gasoline and the batteries. All parts of the governor are accurately fitted; they are made of the best material and will need no attention. When the engine is shipped the governor is properly regulated so that the engine will run at its regular rated speed.

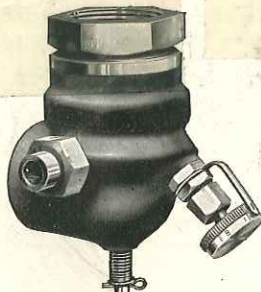
MAKE AND BREAK IGNITER

The igniter shown at the right is of the make and break type; the battery wires are fastened to the insulated and non-insulated poles; the igniter trip is worked by a lever on the cam rod, so as to bring the two igniter points together. They are then released, which gives a spark at just the right time to explode the gas in the cylinder. This igniter is very simple and is easily taken care of. The igniter trip lever located on the valve rod is arranged so that it may be adjusted to advance or retard the spark when necessary to get best results.



IGNITER.

THE GENERATOR



GENERATOR.

We furnish the best and most economical generator on the market. This generator is so constructed as to supply the proper mixture of gasoline and air to the cylinder. The gasoline is fed in through the tube at the left, as shown in the illustration, and the supply is controlled by the numbered dial, the air coming in through the opening at the back of the generator. It is only necessary to regulate the supply of gasoline; no adjustment of the air is needed. The small stem on the bottom of the generator is for flooding the generator in the winter, making it easy to start the engine.

TESTING AND INSPECTION

Every Economy Gasoline Engine is thoroughly tested and inspected before it is shipped. Every part is examined carefully several times before the engine is assembled and must fit properly and work perfectly. After the engine is put together it is again thoroughly inspected and in the testing room is run on the block to limber it up and then under a heavy brake load till we are sure it develops its full rated horse power and that it is in perfect running order. This rigid inspection makes it almost impossible for any defective material to go out in an engine, so that when it reaches you all you have to do is connect the batteries, put in the gasoline, and the engine is ready to run.

THE FINISH

Every Economy Gasoline Engine is carefully finished and then painted red, striped with black, as shown in the colored illustrations in this catalog. The painting of the engines is done under the direct supervision of a competent foreman painter, who goes over all the work before the engines are finally turned over to the shipping room. Each engine receives careful attention and will compare in finish with other high grade engines selling for twice the price we ask.

SEARS, ROEBUCK AND CO., CHICAGO, ILLINOIS

What We Furnish With Economy Engines

EVERY ECONOMY GASOLINE ENGINE is shipped set up, complete all ready to run; the gasoline tank is in the base all connected, so that all you have to do is pour in the gasoline and open the throttle on the generator.

There is absolutely nothing more for you to buy when you get an Economy Engine. The wonderful Stand-By Multiple Battery is included free at our regular catalog price for the engine. This battery is fitted with spark coil and switch, the wires are all connected, so that all you have to do is attach the wires to the engine. We also furnish a pair of combination pliers, forceps and screwdriver; two wrenches and an oil can; one quart of the best cylinder oil, one box of grease and a funnel for filling the gasoline tank.

We also send with each engine a book of instructions, which explains how to start, operate and care for the Economy Engine. With the aid of this book you can very easily learn how to take care of your engine and make such adjustments as are necessary from time to time. If you have any trouble, this book tells you just what to do, so you will not have to call in an expert. It is very simple, giving pictures of all the different parts of the engine and explaining just what they are and what to do to make adjustments. This book also gives illustrations and prices on all repair parts, so that in ordering repairs all you have to do is send us the number with the price and they are sent to you the very next day.

Stand-By Multiple Battery Furnished Free With Economy Engines

Moisture Proof, Can't Short Circuit, Perfect Ignition.

The Stand-By Multiple Battery gives a red hot spark and it will last much longer than the regular dry cell equipment furnished on most gasoline engines. This wonderful battery is now furnished as regular equipment on all Economy Engines. Every engine we build and ship out will be fitted with this Stand-By Multiple Battery.



While this Stand-By Multiple Battery costs us several times as much as the regular dry cell equipment usually furnished by gasoline engine manufacturers, it is so much superior to anything ever furnished for the ignition of a gasoline engine, outside of the magneto, that we have decided to add this extra expense to make our engines more satisfactory, so there will be no trouble from the ignition system.

This is only one illustration showing to what extent we will go to add every possible improvement to the Economy Gasoline Engines, keeping them in the lead of all other engines in every possible way.

In buying a gasoline engine, if you cannot get a Stand-By Multiple Battery with it, insist upon a magneto. Do not accept an engine of any kind unless you know you are going to get the hottest possible spark and a reasonable amount of service for the money invested. You can only get this with a magneto or the Stand-By Multiple Battery. The regular dry cell equipment will last from three to four months, according to its use. The Stand-By Multiple Battery will last four or five times as long and give better results.

For running a stationary engine we have known multiple batteries to last from ten to eighteen months, and some of them even longer. This battery is the most satisfactory ignition for gasoline engines. It will save you a great deal of time, trouble and expense, and renewals can be had at any time on short notice and at very low cost.

Here is the price of the Stand-By Multiple Battery if you want to buy one separate from the engine.

No. 47A256 Stand-By Multiple Battery only. Weight, 25 pounds. Price. \$4.00

SEARS, ROEBUCK AND CO., CHICAGO, ILLINOIS

Quick Delivery From Warehouse

Kansas City, Mo., St. Paul, Minn., Harrisburg, Penn.

We Can Make Immediate Shipment From Any of These Warehouses, Saving You a Great Deal of Time in Delivery and Saving You Considerable in Freight Charges.

FOR QUICK DELIVERY we have arranged to carry a supply of our 2, 4 and 6-horse power Economy Gasoline Engines and Pumping Outfits, all crated, with complete equipment, as described below, including Stand-By Multiple Battery, in the above warehouses.

The difference between the warehouse price and the price for the engine shipped from our factory in Michigan is the carload freight rate from the factory to the warehouse and a very small charge for storage, so that by shipping from the warehouse we save you the difference between the carload and the local freight rate. All the freight charges you will have to pay on receipt of the engine will be the charges from the warehouse to your station.

Shipping you an engine from one of these warehouses gives you the lowest possible freight rate and the quickest delivery. The engines are all ready for immediate delivery and will be shipped the next day after we receive your order, so that the engine will reach you in the shortest possible time. SEND ALL ORDERS TO SEARS, ROEBUCK AND CO., CHICAGO, ILLINOIS. Also specify from which warehouse you wish the engine shipped.

2-Horse Power Stationary Engine

See picture of engine on opposite page.

All ready to run with gasoline tank in base, Stand-By Multiple Battery, spark coil, wire, pliers, monkey wrench, oil can, 1 quart of oil and one box of grease; also a complete instruction book which explains how to care for and operate the engine. For description and price of engine shipped from factory at Sparta, Mich., see page 13.

Specifications 2-Horse Power Engine.

TYPE —Four-cycle, water cooled.	PULLEY —8 inches in diameter, 4-inch face.
BORE —4 inches.	CRANK SHAFT —Drop forged. Diameter, 1½ in.
STROKE —6 inches.	FLOOR SPACE REQUIRED —25x40 inches.
SPEED —450 revolutions per minute.	SHIPPING WEIGHT —550 pounds.
FLY WHEEL —Diameter, 22 inches. Weight, 65 pounds.	

Prices 2-Horse Power Engine.

Shipped from warehouse at Kansas City, Mo., St. Paul, Minn., or Harrisburg, Penn.

No. 47A4600 2-Horse Power Gasoline Engine and Equipment, including Stand-By Multiple Battery.

Price..... \$43.75

No. 47A4615 2-Horse Power Pumping Outfit, including 2-horse power engine, pump jack and belt, with extra 4x4-inch pulley for pumping. For description see page 22. Price... \$48.75

4-Horse Power Stationary Engine

See picture of engine on opposite page.

All ready to run, with gasoline tank in base, Stand-By Multiple Battery, spark coil, wire, pliers, monkey wrench, oil can, 1 quart of oil and one box of grease; also a complete instruction book. For description and price of engine shipped from factory at Sparta, Mich., see page 14.

Specifications 4-Horse Power Engine.

TYPE —Four-cycle, water cooled.	PULLEY —12 inches in diameter, 6-inch face.
BORE —4½ inches.	CRANK SHAFT —Drop forged. Diameter, 1¾ in.
STROKE —9 inches.	FLOOR SPACE REQUIRED —29x47 inches.
SPEED —400 revolutions per minute.	SHIPPING WEIGHT —775 pounds.
FLY WHEEL —Diameter, 26 inches. Weight, 135 pounds.	

Prices 4-Horse Power Engine.

Shipped from warehouse at Kansas City, Mo., St. Paul, Minn., or Harrisburg, Penn.

No. 47A4601 4-Horse Power Gasoline Engine and Equipment, including Stand-By Multiple Battery.

Price..... \$76.95

No. 47A4616 4-Horse Power Pumping Outfit, including 4-horse power engine, pump jack and belt, with extra 6x4-inch pulley for pumping. For description see page 22. Price... \$82.00

6-Horse Power Stationary Engine

See picture of engine on opposite page.

This is the engine we recommend for general farm work. Be sure when buying to get plenty of power. This engine will do the heavy work and take care of the small jobs too and do them economically. Furnished complete all ready to run with gasoline tank in the base, Stand-By Multiple Battery, spark coil, wire, pliers, monkey wrench, oil can, 1 quart of oil and one box of grease; also a complete instruction book. For description and price of engine shipped from factory at Sparta, Mich., see page 15.

Specifications 6-Horse Power Engine.

TYPE —Four-cycle, water cooled.	SPEED —375 revolutions per minute.	PULLEY —16 inches in diameter, 8-inch face.	FLOOR SPACE REQUIRED —31x56 inches.
BORE —5½ inches.	FLY WHEEL —Diameter, 30 inches. Weight, 185 pounds.	CRANK SHAFT —Drop forged. Diameter, 2 inches.	SHIPPING WEIGHT —1,200 pounds.

Prices 6-Horse Power Engine.

Shipped from warehouse at Kansas City, Mo., St. Paul, Minn., or Harrisburg, Penn.

No. 47A4602 6-Horse Power Gasoline Engine and Equipment, including Stand-By Multiple Battery.

Price..... \$107.35

No. 47A4617 6-Horse Power Pumping Outfit, including 6-horse power engine, pump jack and belt, with extra 8x4-inch pulley for pumping. For description see page 22. Price..... \$109.60

SEARS, ROEBUCK AND CO., CHICAGO, ILLINOIS

Stationary Engines and Pumping Outfits

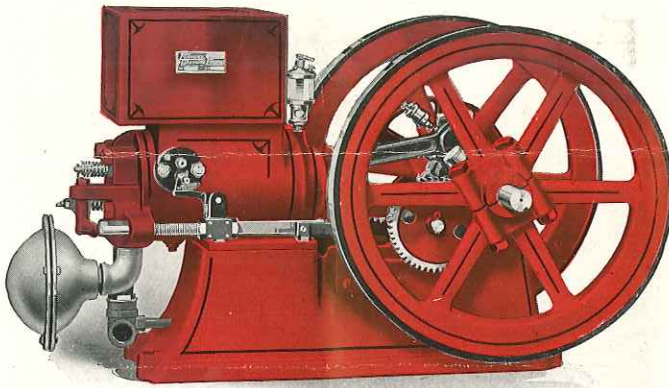
Shipped From Warehouses at

KANSAS CITY, MO.

ST. PAUL, MINN.

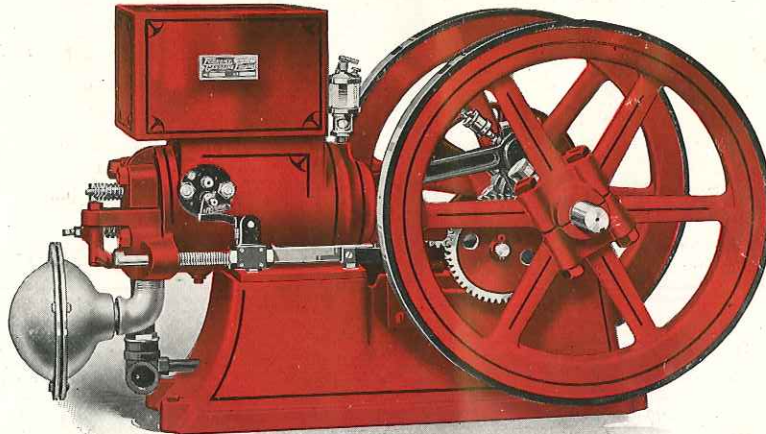
HARRISBURG, PENN.

See opposite page for prices.



No. 47A4600 2-Horse Power - - \$43⁷⁵

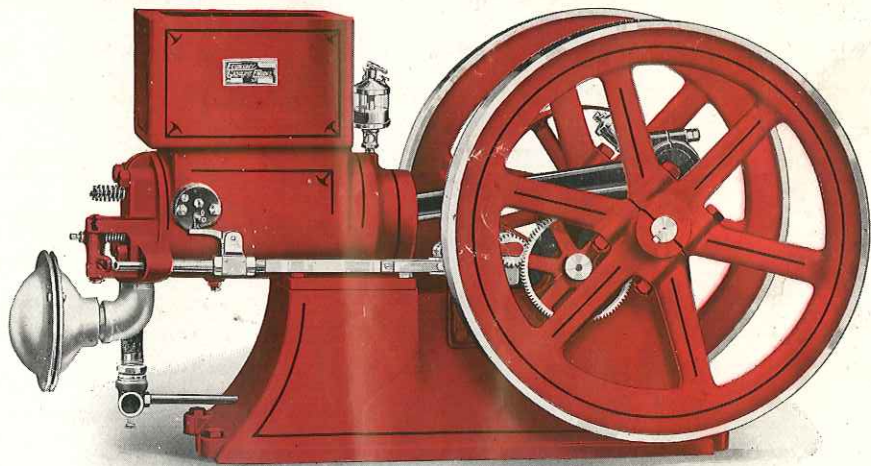
A
Stand-By
Multiple
Battery
With Every
Engine.



Shipped
on
Sixty Days'
Trial.

No. 47A4601 4-Horse Power - - \$76⁹⁵

These engines when shipped from warehouse are only furnished with such equipment as described on opposite page, but we can ship such other outfits or equipment as you may want from our factory at Sparta, Mich. See following pages for descriptions and prices.

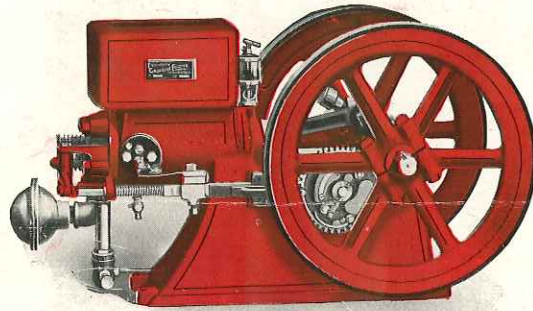


No. 47A4602 6-Horse Power - - - - \$107³⁵

SEARS, ROEBUCK AND CO., CHICAGO, ILLINOIS

-11-

1-Horse Power Economy Stationary Gasoline Engine



No. 47A4508 1-Horse Power Stationary Gasoline Engine. Price - - - - - **\$26⁹⁵**

THIS ENGINE GUARANTEED EQUAL TO ANY ENGINE SELLING FOR TWICE OUR PRICE.

TYPE—Four-cycle, water cooled. **PULLEY**—4 inches in diameter; 4-inch face.
BORE— $3\frac{1}{4}$ inches. **STROKE**—5 inches. **CRANK SHAFT**—Drop forged, $1\frac{1}{4}$ inches in diameter.
SPEED—500 revolutions per minute. **FLOOR SPACE REQUIRED**—18x24 inches.
FLY WHEEL—Diameter, 18 inches. Weight, 44 pounds. **SHIPPING WEIGHT**—350 pounds.

Shipped from our factory at Sparta, Michigan.

OUR LITTLE 1-HORSE POWER ECONOMY GASOLINE ENGINE is the greatest value in a small horse power engine because it gives more horse power for the money than was ever offered by anyone. It is built in the same shop, by the same high grade workmen and on the same high grade machines as our higher priced engines. It is fully tested and inspected before being shipped and we guarantee it to be absolutely satisfactory.

We build this little engine to supply the demand for a small engine, and while we guarantee it to be high grade in every respect and that it will develop its full rated horse power, we want to caution you not to buy too small an engine. It has been the experience of most everyone who buys a gasoline engine that after they have purchased a small engine they find that there are other things they could do if they had more power, thus saving time and money, and we really believe that nothing less than a 2-horse power engine should be used for any kind of work.

In buying a gasoline engine you want to be sure to have plenty of power. For farm and shop use we would not recommend less than a 4-horse power engine. A 6-horse power engine is even better than a 4-horse power; it will save you money in the long run to buy a larger engine.

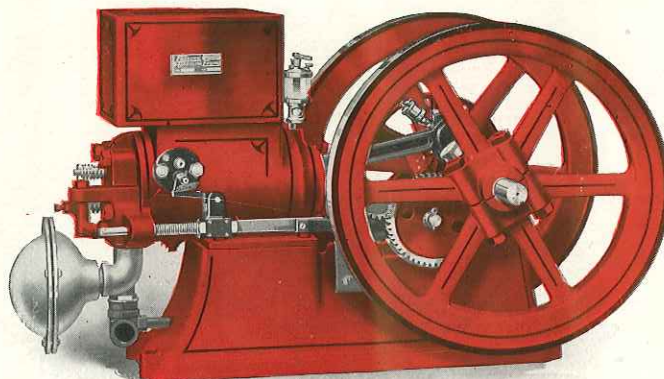
For complete description of how this gasoline engine is made, please read pages 6, 7 and 8.

Before ordering a gasoline engine we suggest that you study over the different things that you can do with it. Look into the future and see what machines you are going to use in the next year or two; then, if you are not sure as to what size engine you need, write us just what work you want to do and we will be glad to tell you just what size engine will do your work most economically, both as to the original cost and the running expense of the engine.

SEARS, ROEBUCK AND CO., CHICAGO, ILLINOIS

—12—

2-Horse Power Economy Stationary Gasoline Engine



No. 47A4510 2-Horse Power Stationary Gasoline Engine. Price - - - - - **\$41⁷⁵**

THIS ENGINE GUARANTEED EQUAL TO ANY ENGINE SELLING FOR TWICE OUR PRICE.

TYPE—Four-cycle, water cooled.
BORE—4 inches. **STROKE**—5 inches.
SPEED—450 revolutions per minute.
FLY WHEEL—Diameter, 22 inches. Weight,
65 pounds.

PULLEY—8 inches in diameter; 4-inch face.
CRANK SHAFT—Drop forged, 1½ inches in diameter.
FLOOR SPACE REQUIRED—25x40 inches.
SHIPPING WEIGHT—550 pounds.

Shipped from our factory at Sparta, Michigan.

OUR 2-HORSE POWER ECONOMY GASOLINE ENGINE may be used for running machinery usually operated by hand, such as feed cutters, grinders, grindstones, cream separators, washing machines, churns, sheep shearing machines, small lathes, drill presses, pumps, and other light machinery. This engine is equal to any engine of equal rated horse power on the market and for light work it cannot be beaten. You should be very careful, however, in selecting a gasoline engine to be sure you have enough power, as it will save you buying a larger engine later on. We recommend our 4-horse power engine for general work on the farm or in the shop. A 6-horse power engine is the best, as you will find after using a gasoline engine that there are a great many things that you can do that you never thought of before. If you are not exactly sure as to just what size engine you will require, write us before placing your order. At our price the engine is all ready to run, with gasoline tank in the base, Stand-By Multiple Battery, spark coil, wire, pliers, monkey wrench, oil can, 1 quart of oil and one box of grease; also a complete instruction book which explains how to care for and operate the engine.

For complete description of how our gasoline engines are made, please read pages 6, 7 and 8.

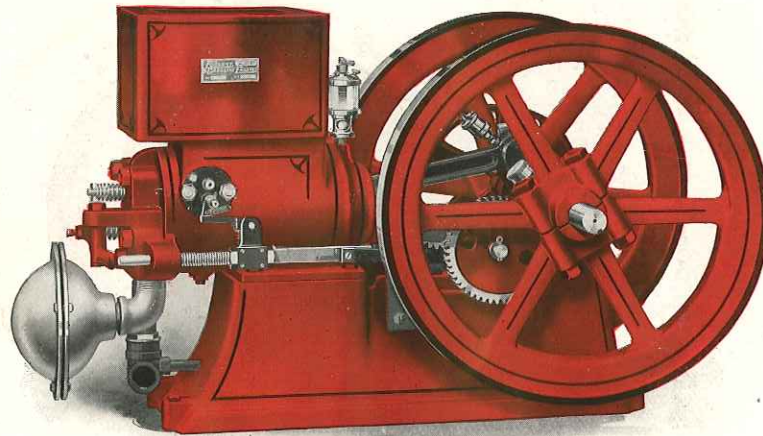
Don't hesitate to write us for any information about any of our engines or about any farm machinery, line shafting, pumping outfits, or other machinery proposition. If you don't know just what size engine to buy, write us before ordering, giving full particulars, and we will tell you just what you need and quote prices on a complete outfit if you so desire.

SEARS, ROEBUCK AND CO., CHICAGO, ILLINOIS

—13—

WWW.HerculesEngines.com

4-Horse Power Economy Stationary Gasoline Engine



No. 47A4511 4-Horse Power Stationary Gasoline Engine. Price - - - - - **\$73⁹⁵**

THIS ENGINE GUARANTEED EQUAL TO ANY ENGINE SELLING FOR TWICE OUR PRICE.

TYPE—Four-cycle, water cooled.
BORE—4½ inches. **STROKE**—9 inches.
SPEED—400 revolutions per minute.
FLY WHEEL—Diameter, 26 inches. Weight, 135 pounds.

PULLEY—12 inches in diameter; 6-inch face.
CRANK SHAFT—Drop forged, 1¾ inches in diameter.
FLOOR SPACE REQUIRED—29x47 inches.
SHIPPING WEIGHT—775 pounds.

Shipped from our factory at Sparta, Michigan.

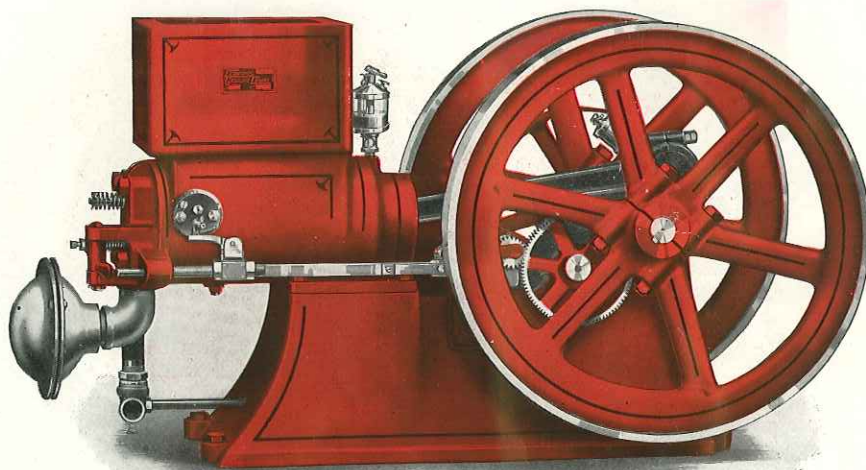
WE RECOMMEND OUR 4-HORSE POWER GASOLINE ENGINE FOR GENERAL FARM WORK; it is very powerful and will run the usual size of machines found on the average farm. It will also run some of the larger machines, but will give a limited capacity. It will take care of all machines usually run by hand, small grinders, corn shellers, shredders, light ensilage cutters, wood saws from 20 to 24 inches in diameter and many other light power driven machines. For shop work it will handle all machines usually run by hand, together with light lathes, drill presses, forges, planers, shapers, trip hammers, etc. We guarantee this engine to be equal to any 4-horse power gasoline engine on the market, and for ordinary work is just the size you want. You should be very careful, however, in ordering a gasoline engine to be sure it will do the work you have for it. Don't buy a larger engine than the 4-horse power if this one will do your work, but we want you to be sure that you have plenty of power. If there is any doubt in your mind, be sure to write us before placing your order. At our price the engine is all ready to run, with gasoline tank in the base, Stand-By Multiple Battery, spark coil, wire, pliers, monkey wrench, oil can, 1 quart of oil and one box of grease; also a complete instruction book which explains how to care for and operate the engine.

For complete description of how our gasoline engines are made, please read pages 6, 7 and 8.

Don't hesitate to write us for any information about any of our engines or about any farm machinery, line shafting, pumping outfits, etc. If you don't know just what size engine to buy, write us before ordering, giving full particulars, and we will tell you just what you need and quote prices on a complete outfit if you so desire.

SEARS, ROEBUCK AND CO., CHICAGO, ILLINOIS

6-Horse Power Economy Stationary Gasoline Engine



This is the size engine we advise for general farm work.

No. 47A4512 6-Horse Power Stationary Gasoline Engine. Price \$102⁸⁵

THIS ENGINE GUARANTEED EQUAL TO ANY ENGINE SELLING FOR TWICE OUR PRICE.

TYPE—Four-cycle, water cooled.
BORE— $5\frac{1}{2}$ inches. **STROKE**—10 inches.
SPEED—375 revolutions per minute.
FLY WHEEL—Diameter, 30 inches. Weight, 185 pounds.

PULLEY—16 inches in diameter; 8-inch face.
CRANK SHAFT—Drop forged, 2 inches in diameter.
FLOOR SPACE REQUIRED— 31×56 inches.
SHIPPING WEIGHT—1,200 pounds.

Shipped from our factory at Sparta, Michigan.

OUR 6-HORSE POWER ECONOMY GASOLINE ENGINE is our most popular size. It is just the right size to handle all machines usually found on the farm, and is not too large to handle the light work as well and do it economically. It is particularly adapted for heavy work, such as wood sawing, saws from 24 inches to 28 inches in diameter, burr mills, ensilage cutters, small threshers, large pumps for irrigating purposes, custom grinding and for line shaft work where a number of light machines are to be run at the same time. It is thoroughly tested and inspected, shipped on sixty days' trial and there is no time limit on the guarantee. At our price the engine is all ready to run, with gasoline tank in the base, Stand-By Multiple Battery, spark coil, wire, pliers, monkey wrench, oil can, 1 quart of oil and one box of grease; also a complete instruction book which explains how to care for and operate the engine.

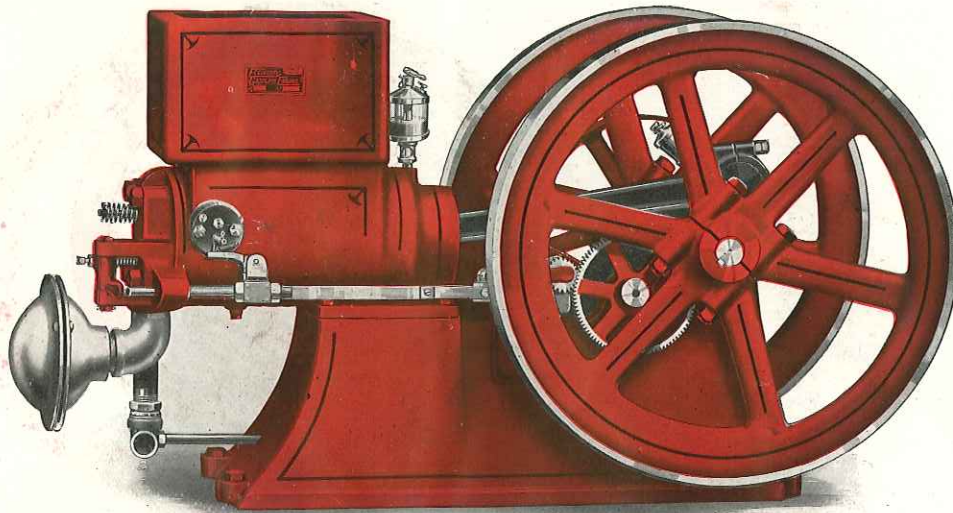
For complete description of how our gasoline engines are made, please read pages 6, 7 and 8.

Don't hesitate to write us for any information about any of our engines or about any farm machinery, line shafting, pumping outfits, etc. If you don't know just what size engine to buy, write us before ordering, giving full particulars, and we will tell you just what you need and quote prices on a complete outfit if you so desire.

SEARS, ROEBUCK AND CO., CHICAGO, ILLINOIS

—15—

8-Horse Power Economy Stationary Gasoline Engine



No. 47A4513 8-Horse Power Stationary Gasoline Engine. Price **\$152⁹⁵**
THIS ENGINE GUARANTEED EQUAL TO ANY ENGINE SELLING FOR TWICE OUR PRICE.

TYPE—Four-cycle, water cooled.
BORE—6½ inches. **STROKE**—12 inches.
SPEED—350 revolutions per minute.
FLY WHEEL—Diameter, 36 inches. Weight, 215 pounds.

PULLEY—16 inches in diameter; 10-inch face.
CRANK SHAFT—Drop forged, 2¼ inches in diameter.
FLOOR SPACE REQUIRED—36x62 inches.
SHIPPING WEIGHT—1,700 pounds.

Shipped from our factory at Sparta, Michigan.

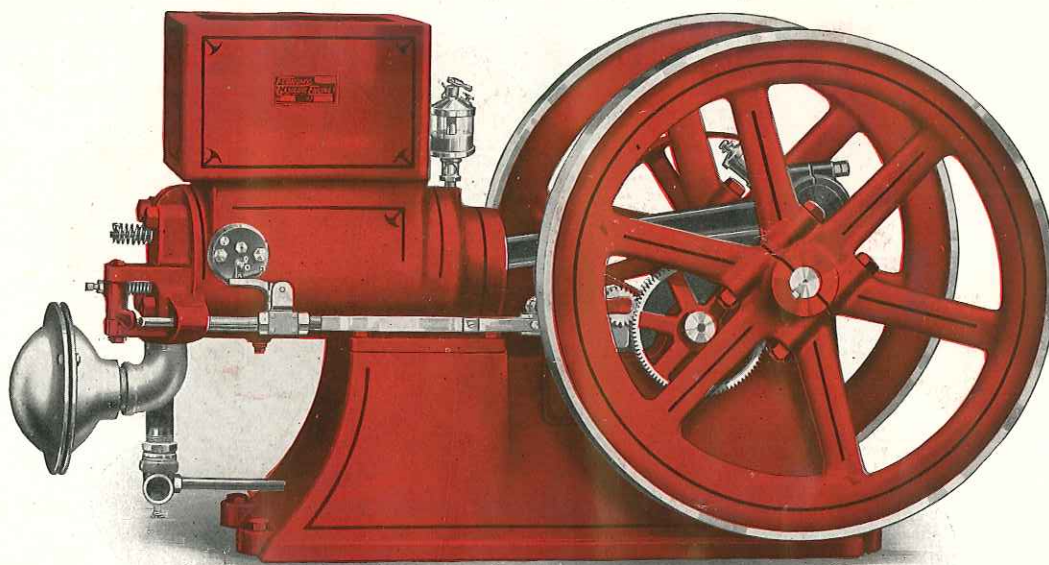
OUR 8-HORSE POWER ECONOMY GASOLINE ENGINE is a heavy duty engine for running heavy machines, such as large burr mills, feed grinders, saws, elevators, ensilage cutters, threshers, heavy line shaft work in machine shops, etc. They are very powerful engines, well made, thoroughly inspected and tested and we guarantee them to be equal to any 8-horse power engine selling for twice our price. They are shipped on sixty days' trial with our broad and binding guarantee behind them. At our price the engine is all ready to run, with gasoline tank in the base, Stand-By Multiple Battery, spark coil, wire, pliers, monkey wrench, oil can, 1 quart of oil and one box of grease; also a complete instruction book which explains how to care for and operate the engine.

For complete description of how our gasoline engines are made, please read pages 6, 7 and 8.

Don't hesitate to write us for any information about any of our engines or about any farm machinery, line shafting, pumping outfits, etc. If you don't know just what size engine to buy, write us before ordering, giving full particulars, and we will tell you just what you need and quote prices on a complete outfit if you so desire.

SEARS, ROEBUCK AND CO., CHICAGO, ILLINOIS

10-Horse Power Economy Stationary Gasoline Engine



No. 47A4514 10-Horse Power Stationary Gasoline Engine. Price **\$221⁵⁰**
THIS ENGINE GUARANTEED EQUAL TO ANY ENGINE SELLING FOR TWICE OUR PRICE.

TYPE—Four-cycle, water cooled.

BORE—7½ inches. **STROKE**—14 inches.

SPEED—300 revolutions per minute.

FLY WHEEL—Diameter, 42 inches. Weight, 370 pounds.

PULLEY—18 inches in diameter; 12-inch face.

CRANK SHAFT—Drop forged, 2½ inches in diameter.

FLOOR SPACE REQUIRED—37x72 inches.

SHIPPING WEIGHT—2,650 pounds.

Shipped from our factory at Sparta, Michigan.

OUR 10-HORSE POWER ECONOMY GASOLINE ENGINE is a heavy duty engine for work similar to that of the 8-horse power engine. It will, of course, do heavier work, handle larger machines, line shafting, etc. We guarantee this engine to be equal to any 10-horse power engine on the market. It is shipped on sixty days' trial, absolutely guaranteed both as to workmanship and material. At our price the engine is all ready to run, with gasoline tank in the base, Stand-By Multiple Battery, spark coil, wire, pliers, monkey wrench, oil can, 1 quart of oil and one box of grease; also a complete instruction book which explains how to care for and operate the engine.

For complete description of how our gasoline engines are made, please read pages 6, 7 and 8.

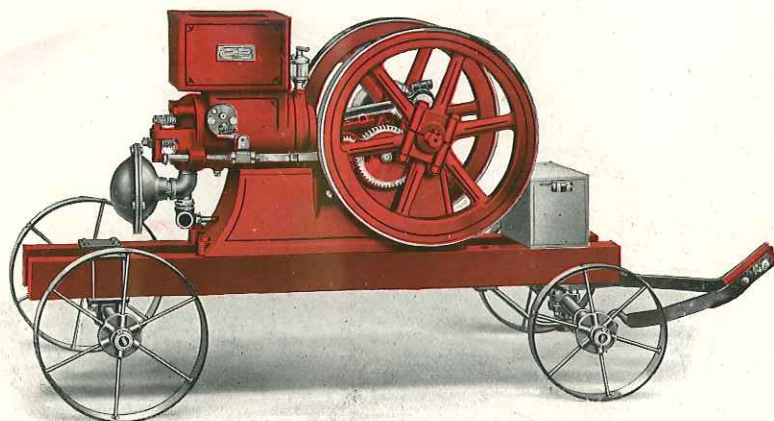
Don't hesitate to write us for any information about any of our engines or about any farm machinery, line shafting, pumping outfits, etc. If you don't know just what size engine to buy, write us before ordering, giving full particulars, and we will tell you just what you need and quote prices on a complete outfit if you so desire.

SEARS, ROEBUCK AND CO., CHICAGO, ILLINOIS

—17—

WWW.HerculesEngines.com

2 and 4-Horse Power Economy Hand Portable Gasoline Engines



No. 47A4535 2-Horse Power Economy Hand Portable Gasoline Engine. Price, - **\$49⁹⁵**
 No. 47A4536 4-Horse Power Economy Hand Portable Gasoline Engine. Price, - **\$82⁶⁵**

THESE ENGINES GUARANTEED EQUAL TO ANY ENGINES SELLING FOR TWICE OUR PRICE.

Horse Power	Bore, Inches	Stroke, Inches	Speed, R. P. M.	Crank Shaft, Inches	Pulley, Inches	Fly Wheel,		Shipping Weight, Pounds
						Diameter, Inches	Weight, Pounds	
2	4	6	450	1½	8x4	22	65	675
4	4½	9	400	1¾	12x6	26	135	925

IT IS A GREAT CONVENIENCE to have an engine that you can pull about from place to place. You can use it in the barn to grind feed, cut fodder or shell corn; you can take it to the house to run the cream separator, washing machine and churn, or when the windmill is not running it will pump water.

These outfits consist of our regular Economy Gasoline Engine, as described in this catalog, mounted on solid wood channels 5 feet long, 2½ inches wide by 3¾ inches thick; metal axles are securely fastened to the channels; the channels are well braced to eliminate vibration; metal wheels 14 inches front, 16 inches rear with 2-inch tires; 30 inches between center of wheels. Each truck is fitted with a substantial hand tongue and we guarantee the outfit to be equal to any portable outfit that you can buy. Engine shipped from factory at Sparta, Mich., truck from factory in Illinois.

If you have only light hand machinery to run, our No. 47A4535 2-Horse Power Portable Outfit is what you want; if you have good size machines or want to run a number of small machines at a time you should buy the 4-Horse Power Outfit.

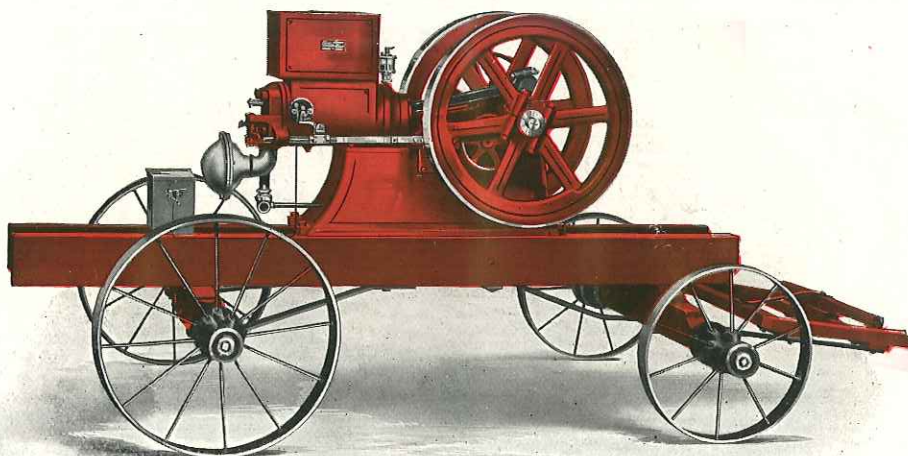
For complete description of how our gasoline engines are made, please read pages 6, 7 and 8.

Don't hesitate to write us for any information about any of our engines or about any farm machinery, line shafting, pumping outfits, etc. If you don't know just what size engine to buy, write us before ordering, giving full particulars, and we will tell you just what you need and quote prices on a complete outfit if you so desire.

SEARS, ROEBUCK AND CO., CHICAGO, ILLINOIS

-18-

4, 6, 8 and 10-Horse Power Portable Gasoline Engines



- No. 47A45361 4-Horse Power Engine on 1-Horse Truck with shafts. Price.....\$101.60
 No. 47A4537 6-Horse Power Engine on 2-Horse Truck with pole. Price..... 131.50
 No. 47A4538 8-Horse Power Engine on 2-Horse Truck with pole. Price..... 181.95
 No. 47A4539 10-Horse Power Engine on 2-Horse Truck with pole. Price..... 254.50

THESE ENGINES GUARANTEED EQUAL TO ANY ENGINES SELLING FOR TWICE OUR PRICE.

Horse Power	Bore, Inches	Stroke, Inches	Speed, R. P. M.	Pulley, Inches	Crank Shaft, Inches	Fly Wheel, Diameter, Inches	Weight, Pounds	Shipping Weight, Pounds
4	4½	9	400	12x 6	1¾	26	135	1,325
6	5½	10	375	16x 8	2	30	185	1,750
8	6½	12	350	16x10	2¼	36	215	2,350
10	7½	14	300	18x12	2½	42	370	3,310

PORTABLE OUTFITS, 4, 6, 8 and 10-horse power, are used for sawing wood, running the thresher, ensilage cutter, bean hullers, hoists, etc., and can be hauled from farm to farm for grinding, wood sawing, etc.

The outfits consist of gasoline engines, as described in this catalog, mounted on solid wood channels with wood axles; steel wheels 24 inches front and 30 inches rear. Axles are of proper size and strength to carry the weight of the engine with the least vibration. The 4 and 6-horse power trucks have 3x9-inch skeins and 3-inch tires; the 8-horse power truck has 3¼x10-inch skeins with 4-inch tires; the 10-horse power truck has 3½x10-inch skeins with 4-inch tires. Width of track is 4 feet 8 inches on all sizes. When not in use as a portable outfit the engine can be taken from the truck and used inside for running such machinery as you desire. For general farm work and running the average machines we recommend our 6-horse power engine.

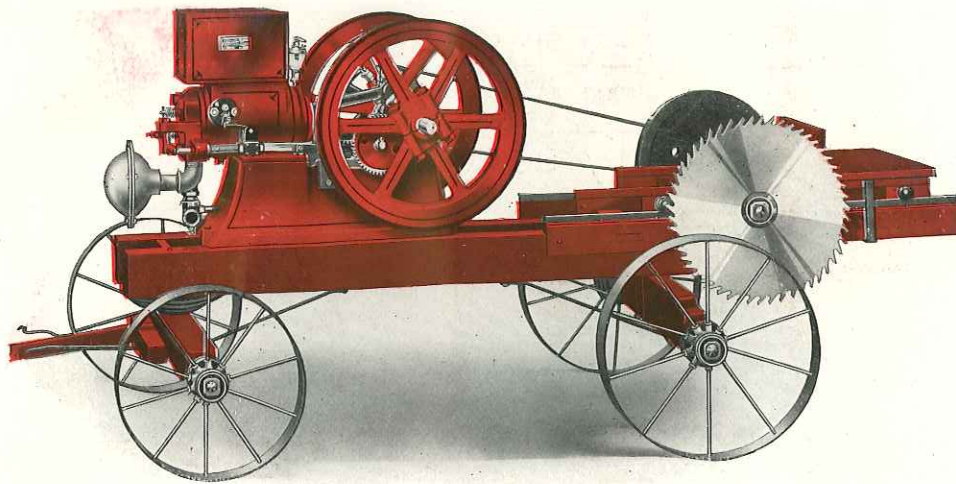
Engine shipped from factory at Sparta, Mich. Truck from factory in Illinois. You can put the outfit together without any trouble and by shipping from two different factories we are able to save you considerable in extra freight and handling expense.

For complete description of how our gasoline engines are made, please read pages 6, 7 and 8.

Don't hesitate to write us for any information about any of our engines, or about any farm machinery, line shafting, pumping outfits, etc. If you don't know just what size engine to buy, write us before ordering, giving full particulars and we will tell you just what you need and quote prices on a complete outfit if you so desire.

SEARS, ROEBUCK AND CO., CHICAGO, ILLINOIS

4, 6 and 8-Horse Power Wood Sawing Outfits



- No. 47A4595 4-Horse Power Sawing Outfit with shafts, 24-inch saw. Price.....\$129.75**
No. 47A4596 6-Horse Power Sawing Outfit with pole, 28-inch saw. Price..... 162.95
No. 47A4597 8-Horse Power Sawing Outfit with pole, 30-inch saw. Price..... 215.95

THESE ENGINES GUARANTEED EQUAL TO ANY ENGINES SELLING FOR TWICE OUR PRICE.

Horse Power	Bore, Inches	Stroke, Inches	Speed, R. P. M.	Pulley, Inches	Diameter of Saw, Inches	Shipping Weight, Pounds
4	4½	9	400	16x 6	24	1,675
6	5½	10	375	16x 8	28	2,125
8	6½	12	350	18x10	30	2,725

A GASOLINE ENGINE has no equal for sawing wood. It will do more work with less trouble and expense than any other power. Our Combination Wood Sawing Outfit will pay for itself in a very short time in sawing wood alone. You can also use the engine for stationary work and as it is mounted on a truck it can be hauled to your neighbor's to saw his wood, grind feed, etc.

These outfits consist of the engine mounted on solid wood channels with wood axles, steel wheels 24 inches front, 30 inches rear; axles are of proper size and strength to carry the weight of the engine with the least vibration. The 4 and 6-horse power truck has 3x9-inch skeins and 3-inch tires; the 8-horse power truck has 3¼x10-inch skeins and 4-inch tires. Width of track on all sizes is 4 feet 8 inches.

A sliding saw table is fastened to the back of the truck by four bolts. We furnish saw mandrel, balance wheel, saw and belt so that the outfit is all ready to run when you receive it. When not in use for sawing wood you can take the sliding table off by removing the four bolts, giving you a portable outfit. Our 4-Horse Power Outfit is furnished with shafts for one horse; the 6 and 8-Horse Power Outfits with pole. We will furnish the 4-Horse Power Outfit with pole in place of shafts, at the same price.

For custom sawing and general farm work we recommend our 6-Horse Power Outfit, as this size will handle almost any machinery used on the farm and will take care of the light work as well. All outfits are fully guaranteed and shipped on sixty days' trial. The engine is furnished complete with full equipment.

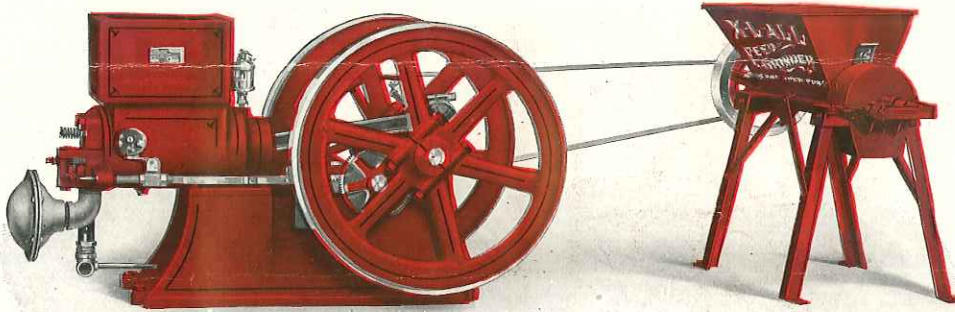
NOTE—We ship these outfits from separate factories. The engine from our factory at Sparta, Mich.; the balance of the outfit from factory in Illinois. All parts are carefully fitted and you will have no trouble in putting the outfit together. By shipping from two different factories we are able to save you considerable in freight and handling expense.

For complete description of how our gasoline engines are made, please read pages 6, 7 and 8.

Don't hesitate to write us for any information about any of our engines or about any farm machinery, line shafting, pumping outfits, etc. If you don't know just what size engine to buy, write us before ordering, giving full particulars, and we will tell you just what you need and quote prices on a complete outfit if you so desire.

SEARS, ROEBUCK AND CO., CHICAGO, ILLINOIS

4, 6 and 8-Horse Power Feed Grinding Outfits



No. 47A4603	4-Horse Power Grinding Outfit, Including Engine, No. 1 X-L-ALL Feed Grinder and 30-Foot 4-Inch Four-Ply Endless Canvas Belt. Price.....	\$ 96.35
No. 47A4604	6-Horse Power Grinding Outfit, Including Engine, No. 1 X-L-ALL Feed Grinder and 30-Foot 6-Inch Four-Ply Endless Canvas Belt. Price.....	127.45
No. 47A4609	8-Horse Power Grinding Outfit, Including Engine, No. 2 X-L-ALL Feed Grinder and 30-Foot 8-Inch Six-Ply Endless Canvas Belt. Price.....	189.15

THESE ENGINES GUARANTEED EQUAL TO ANY ENGINES SELLING FOR TWICE OUR PRICE.

Horse Power	Bore, Inches	Stroke, Inches	Speed, R. P. M.	Pulley, Inches	Shipping Weight, Pounds
4	4 $\frac{1}{2}$	9	400	16x 6	1,075
6	5 $\frac{1}{2}$	10	375	16x 8	1,550
8	6 $\frac{1}{2}$	12	350	16x10	2,200

Do Your Own Feed Grinding Save the Long Haul to Town

THESE OUTFITS consist of engine, feed grinder and belt, all ready to grind feed.

The Engines are the same as those described on pages 14, 15 and 16. They are complete with full equipment, all set up and ready to run. We guarantee them to develop their full rated horse power and to be equal to any gasoline engine on the market.

The X-L-ALL Grinder will crush and grind corn on the cob or cob alone, also shelled corn, wheat, oats, rye, barley or any kind of small grain, either separately or mixed. We furnish three sets of burrs with each grinder, which provide for a variety of products, ranging from the rough feed with the coarse burrs to as good a quality of table meal with the fine burrs as can be produced on any steel burr mill.

Mill is fitted with fly wheel, and the internal mechanism is so arranged that in case an obstruction should get into the burrs, a small wood break pin gives way, allowing the burrs to spread apart, which prevents damage. After obstruction has passed through, another wood pin can be put in place and the mill is ready for operation. Burrs cannot run together when empty.

The 4-Horse Power Outfit will grind about 12 bushels of ear corn or 25 bushels of shelled corn per hour. The 6-Horse Power Outfit will grind about 15 bushels of ear corn or 35 bushels of shelled corn per hour. The 8-Horse Power Outfit will grind about 20 bushels of ear corn or 45 bushels of shelled corn per hour. For general farm work and to secure full capacity from the No. 1 Grinder we recommend the 6-Horse Power Outfit, No. 47A4604. If you are in doubt as to which outfit you should buy, write and tell us what you have for an engine to do and our experts will tell you which engine you should have.

NOTE—Engine and grinder shipped from separate factories to save you extra freight and handling expense. Engine from factory at Sparta, Mich. Mill from factory in Ohio. Mill is all set up; when you receive it all you have to do is attach the belt and it is ready to run. Shipped on sixty days' trial, fully guaranteed.

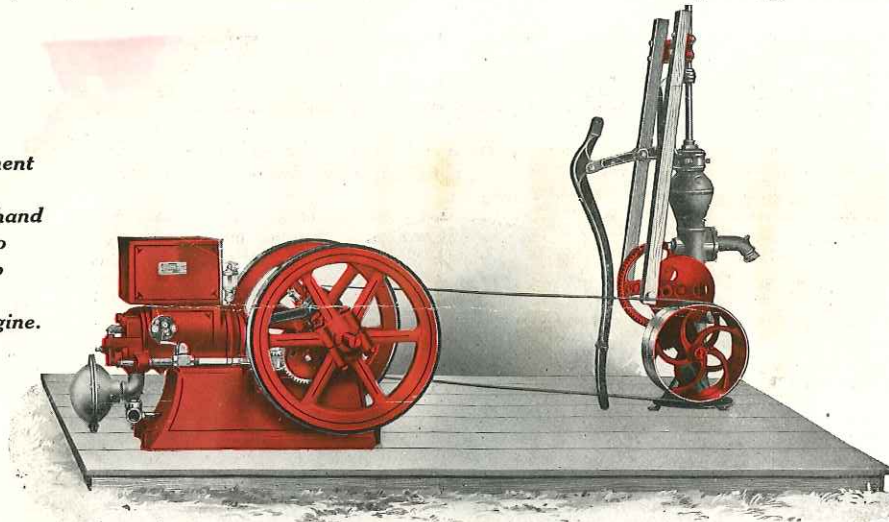
For complete description of how our gasoline engines are made, please read pages 6, 7 and 8.

Don't hesitate to write us for any information about any of our engines or about any farm machinery, line shafting, pumping outfits, etc. If you don't know just what size engine to buy, write us before ordering, giving full particulars, and we will tell you just what you need and quote prices on a complete outfit if you so desire.

SEARS, ROEBUCK AND CO., CHICAGO, ILLINOIS

1, 2, 4 and 6-Horse Power Pumping Outfits

A
Pump Jack
 is an attachment
 that will fit
 any ordinary hand
 force pump so
 you can pump
 water with
 a gasoline engine.



Prices on
 these outfits
 do not include
 the pump.

No. 47A4554	1-Horse Power Pumping Outfit, Engine, Jack and Belt.	Price.....	\$ 30.95
No. 47A4550	2-Horse Power Pumping Outfit, Engine, Jack and Belt.	Price.....	46.50
No. 47A4551	4-Horse Power Pumping Outfit, Engine, Jack and Belt.	Price.....	78.75
No. 47A4552	6-Horse Power Pumping Outfit, Engine, Jack and Belt.	Price.....	104.85

For price on belting or pump jack only see pages 25 and 26.

THESE ENGINES GUARANTEED EQUAL TO ANY ENGINES SELLING FOR TWICE OUR PRICE.

Horse Power	Bore, Inches	Stroke, Inches	Speed, R. P. M.	Pulley, Inches	Shipping Weight, Pounds
1	3¼	5	500	4x4	450
2	4	6	450	4x4	650
4	4½	9	400	6x4	875
6	5½	10	375	8x4	1,300

Shipped from our factory at Sparta, Michigan.

A PUMPING OUTFIT on the farm will in one season more than pay for itself in pumping water alone. Our 1-horse power outfit connected to an ordinary windmill force pump with a 3-inch cylinder will pump about 5,440 gallons of water in ten hours, using about 1¼ gallons of gasoline. If you have an Economy Engine you do not have to depend on the wind for your water. It may be used for other purposes; to run the cream separator, feed grinder, grindstone, washing machine, churn or any other machinery operated by hand. If you want an engine for pumping water and don't know just what size to buy, write us and our experts will tell you what size you need. The Economy Pumping Outfits at the prices we ask are complete with engine, as described in this catalog, pump jack, back geared 4 to 1 with three strokes, 5, 7½ and 10, and fitted with tight and loose pulley. We also furnish an 11-foot 2-inch rubber belt, so that the outfit when shipped is all ready to pump water.

NOTE—If you want larger pulleys than furnished with these outfits for other work they will have to be purchased extra. See prices on page 26.

For complete description of how our engines are made, please read pages 6, 7 and 8.

Don't hesitate to write us for any information about any of our engines or about any farm machinery, line shafting, pumping outfits, etc. If you don't know what size engine to buy, write us before ordering, giving full particulars, and we will tell you just what you need and quote prices on a complete outfit if you so desire.

SEARS, ROEBUCK AND CO., CHICAGO, ILLINOIS

Increase Your Crops by Irrigation

Let Our Irrigation Experts Tell You What You Need. Information Absolutely Free

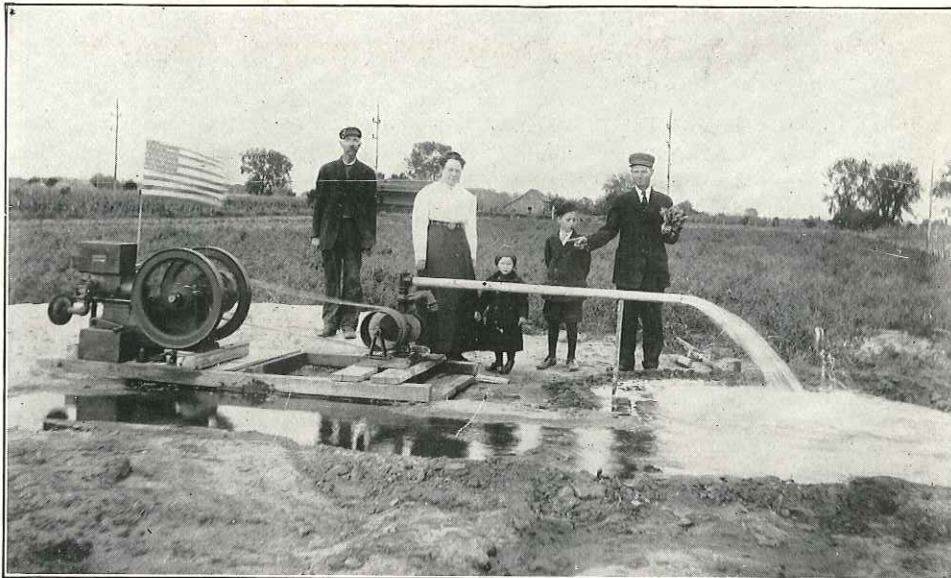
DID YOU EVER STOP TO THINK how much your success as a farmer depends on the moisture the soil gets? Do you know that some of the driest and most arid districts in the Southwestern states are now producing splendid crops year after year because they are properly irrigated?

Crop growing by irrigation has made wonderful strides in the past few years and will make still further progress in the future. It is hardly necessary for us to advance any arguments in favor of irrigation, as we believe every farmer knows that his crop yield depends to a great extent on the amount of moisture his land gets.

Methods of irrigation have been discussed pro and con and there are several different ways of securing the same results and we believe that the majority of farmers are hesitating to install an irrigating outfit, not because they don't appreciate its advantages, but because they do not know what outfit to buy. For this reason we have established a Department of Irrigation, composed of irrigating experts who are thoroughly acquainted with all conditions throughout the United States and with the different methods of irrigation. *The advice of these experts is yours for the asking.* We make no charge and will gladly figure out a complete outfit for you.

The illustrations on this page show but two of the pumps we are prepared to furnish. Our prices will save you considerable money over what you would have to pay elsewhere, and every outfit is guaranteed absolutely to give satisfactory service and is shipped on trial. If it does not prove satisfactory you can return it and we will send back your money, together with any freight charges you paid.

Address, DEPT. 47, MECHANICAL ENGINEERS, SEARS, ROEBUCK AND CO., CHICAGO, ILLINOIS.



The Above Picture Is Made From a Photograph Taken by Mr. Chas. H. Cooley, Wichita, Kan.

You can see what Mr. Cooley has to say in his letter below. Just back of the engine and pump are 2 acres of tomatoes that Mr. Cooley tells us in another letter were just as good as dead for want of water when he bought the outfit. To the left he has 1 acre of sweet potatoes, altogether he is irrigating $7\frac{1}{2}$ acres with this outfit and has already paid for it several times over.

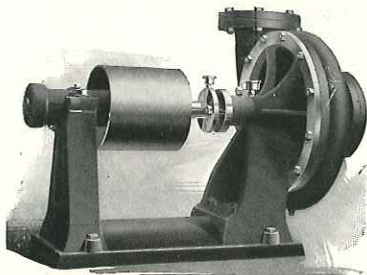
Irrigates $7\frac{1}{2}$ Acres. Saved \$52.50 on the Engine.

Wichita, Kan.

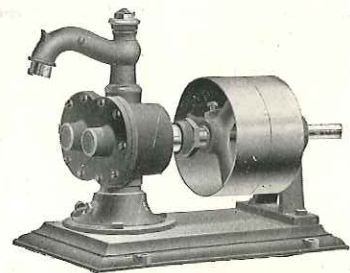
Sears, Roebuck and Co., Chicago, Ill.

Gentlemen:—This is a true picture of my irrigating plant. Last June I bought a 4-Horse Power Economy Gasoline Engine from you, with which I am well pleased. I find this engine all right in every respect, giving great pulling power; it is simple in construction and easy to operate. My ten-year old boy can start it and take care of it while I take care of the water. I am running a No. 5 rotary pump, throwing 60 gallons of water a minute, at a cost of about 5 quarts of gasoline for a twenty-four-hour run. I saved \$52.50 on this engine and can cheerfully recommend it to be all right. Yours very truly,

CHAS. H. COOLEY.



Centrifugal Pump.



Rotary Pump.

SEARS, ROEBUCK AND CO., CHICAGO, ILLINOIS

—23—

WWW.HerculesEngines.com

Run All of Your Machinery From a Line Shaft



**OUTFIT FIGURED
OUT FOR ONE OF
OUR CUSTOMERS**

IT IS MORE ECONOMICAL to run several machines at the same time than to run each one separately. By putting in a line shaft and connecting all your machines you can run them all at the same time with one gasoline engine, or you can run each one separately which will mean not only economy in time, but a great saving in gasoline and oil.

If you are interested in an outfit of this kind, write and tell us just what machines you want to run. We will tell you just what you need and send you prices on the complete outfit, with a drawing showing how to put it up.

The above picture shows but one of the many outfits we are prepared to furnish. If you will write and tell us what you want to do, our experts will figure out an outfit for you; all information absolutely free. Address your letter to

DEPT. 47, MECHANICAL ENGINEERS, SEARS, ROEBUCK AND CO., CHICAGO, ILL.

Prices on the Items Shown in the Above Picture

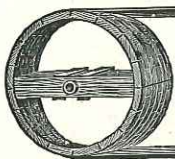
Following are the prices of the items shown in the above picture, all of which are shipped from our engine factory in Southern Michigan with the exception of the cream separator, which is shipped from the factory in Iowa, and the washing machine, churn and pump, which are shipped from Chicago. All line shafting, pulleys, belting, etc., will be included with the engine shipment from factory, thus delivering the outfit to you at the smallest possible cost for freight.

PRICES

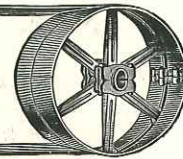
No. 47A4510 2-Horse Power Economy Gasoline Engine.....	\$41.75	No. 42A5276 1/4 One Pump Standard, 3-inch cylinder, without rod or pipe.....	\$3.98
No. 23A24 600-Pound Economy Chief Separator.....	42.35	No. 47A4542 One 18x4-Inch Pulley on line shaft from engine.....	2.25
No. 47A4553 Pump Jack.....	4.75	No. 47A4619 One 3x6-Inch Wood Pulley on line shaft to churn.....	1.10
No. 44A7537 Wizard Power Washer.....	9.70	No. 47A4542 One 8x4-Inch Pulley on line shaft to washer.....	.85
No. 9A29195 Power Churn, 20 gallons.....	6.20	No. 47A4542 One 10x4-Inch Pulley on line shaft to pump jack.....	1.00
No. 47A4606 12 Feet 1 1/4-Inch Line Shaft.....	1.80	No. 47A4549 100 Feet 2-Inch 3-Ply Rubber Belt, at 9 cents a foot.....	9.00
No. 47A4614 Three Shaft Hangers, at \$1.25.....	3.75	No. 47A4547 One Box Steel Belt Fasteners, sufficient for the above belting.....	.58
No. 47A4608 Two Safety Set Collars.....	.20		
No. 47A4502 One Economy Governor Pulley to run separator.....	5.75		
No. 47A4503 One Separator Clutch Pulley.....	2.25		
		TOTAL PRICE OF COMPLETE OUTFIT...	\$137.26

SEARS, ROEBUCK AND CO., CHICAGO, ILLINOIS

-24-



Line Shafting, Pulleys, Hangers, Belting



All Items Shown On These Pages Shipped From Factory at Sparta, Michigan.

Cast Iron Pulleys for Line Shaft Work.

A cast iron pulley is perfectly satisfactory for the ordinary line shaft work where 2 or 4-horse power engine is used and a pulley of this kind is a great deal cheaper than any other pulley you can buy. We guarantee these pulleys to give you satisfactory service and will replace any that prove defective. They are made of close grained gray iron, nicely painted, bored for 1 1/4-inch shaft

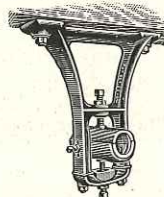
and held in place with set screw. We can ship these pulleys from our Chicago store as well as from the factory.

No. 47A4542 Cast Iron Pulleys.

Diameter, Inches	Face, Inches	Price, Each	Diameter, Inches	Face, Inches	Price, Each
4	2	45c	10	4	\$1.00
4	4	55c	12	2	1.10
6	2	60c	12	4	1.20
6	4	70c	14	4	1.50
8	2	75c	16	4	1.80
8	4	85c	18	4	2.25
10	2	90c	20	4	2.70

Universal Ball and Socket Hangers.

Double braced, wick oiling bearings, bab-bitted and reamed. A strong, durable hanger for light or heavy line shaft work. Bearings have large oil reservoirs and wick packing, which insures proper lubrication.



We carry these hangers in stock at our factory in two sizes with 1 1/4-inch bearings only, as we figure that these sizes will take care of the majority of line shaft outfits operated by up to a 10-horse power engine.

No. 47A4613 Adjustable Hanger for pulleys up to 15 inches in diameter, 1 1/4-inch shaft only.....\$1.10

No. 47A4614 Adjustable Hanger for pulleys up to 22 inches in diameter, 1 1/4-inch shaft only..... 1.25

Cold Rolled Steel Shafting.

We furnish one size of shafting only from our factory, 1 1/4 inches in diameter, as we figure that this size is strong enough to take care of the ordinary machines requiring from 2 to 10-horse power. Furnished only in 4, 6, 8, 10, 12, 14, 16, 18, 20 and 24-foot lengths. Be sure when ordering to give catalog number and length desired.

No. 47A606

1 1/4-Inch Cold Rolled Steel Shafting. Price, per foot.... 15c

Safety Set Collar.

This is a collar for slipping on the shaft next to the hanger to prevent the shaft from working back and forth. It is made of cast iron with a set screw for holding it in place.



No. 47A4608 Safety Set Collar for 1 1/4-inch shaft only. Price..... 10c

Rigid Pillow Block.

It is sometimes found advisable to hang line shafting on top of rafters or on blocks placed on the floor, in which case a rigid pillow block is used, such as shown here-with. These blocks are made of soft gray iron, babbitted and reamed. Shipped from our factory in the 1 1/4-inch size only.

No. 47A4541 Rigid Pillow Block for 1 1/4-inch shaft. Price..... 36c

Toughened steel belt lacing, extra strong, quickly applied, saves the belt and makes a smooth joint. Will stand very high speed. Furnished in two sizes only. 100 inches in box. Shipped from our factory.

No. 47A4547 Steel Belt Lacing for 2-inch belts. Price, per box..... 58c

No. 47A4548 Steel Belt Lacing for 4, 6 and 8-inch belts. Price, per box 72c



Wood Split Pulleys.

Made of clear straight grain hardwood, cut in short pieces securely glued and nailed together. All sizes are split and can be taken apart and put on shaft without disturbing other equipment. Prices quoted are for pulleys and bushings complete for 1 1/4-inch shaft only.

No. 47A4619

Diameter, Inches	Face, Inches	Weight, About, Pounds	Price, Each	Diameter, Inches	Face, Inches	Weight, About, Pounds	Price, Each
3	4	2 1/4	\$1.05	12	4	10	\$1.44
3	6	2 1/2	1.10	12	6	12	1.70
4	3	2 3/4	1.05	13	4	13	1.55
4	6	3	1.15	13	6	13 1/2	1.91
5	3	3 1/2	1.05	14	4	14	1.66
5	6	3	1.25	14	6	14 1/2	2.00
6	3	3	1.10	15	4	15	1.77
6	6	3 1/2	1.20	15	6	15 1/2	2.20
7	3	4	1.05	16	4	16	1.98
7	6	4 1/2	1.30	16	6	16 1/2	2.30
8	3	4	1.10	17	4	17	2.08
8	6	4 1/2	1.35	17	6	17 1/2	2.40
9	3	5	1.12	18	4	18	2.10
9	6	5 1/2	1.40	18	6	19	2.60
10	3	6	1.17	20	4	20	2.30
10	6	8	1.45	20	6	22	2.55
11	3	7	1.26	22	4	23	2.21
11	6	9	1.62	22	6	24	2.71

Improved Post Block.

This is a new style block for attaching shafting to post or on the side wall. It is made of soft gray iron, babbitted and reamed. Shipped from our factory in the 1 1/4-inch size only.

No. 47A4543 Improved Post Block for 1 1/4-inch shaft. Price..... 70c



Guaranteed Rubber Belting.

We recommend the use of rubber belting with farm machinery or for small shops. We furnish four sizes that can be shipped from our factory with the engine. These sizes are those most generally used and will be found to answer almost every purpose.

We recommend 2-inch three-ply rubber belting for 1 1/2 and 2-horse power engines; 4-inch four-ply rubber belting for 4-horse power engines; 6-inch four-ply rubber belting for 6-horse power engines. 8-inch four-ply rubber belting for 8 and 10-horse power engines. This belting is fully guaranteed and can be used either for inside or outside work.



No. 47A4549 2-Inch Three-Ply Rubber Belting. Price, per foot..... 9c

No. 47A4590 4-Inch Four-Ply Rubber Belting. Price, per foot..... 24c

No. 47A4591 6-Inch Four-Ply Rubber Belting. Price, per foot..... 38c

No. 47A4546 8-Inch Four-Ply Rubber Belting. Price, per foot..... 52c

NOTE—When ordering belting be sure to give correct length, as belting sent as ordered cannot be taken back or exchanged.

Best Cut Rawhide Belt Lacing.

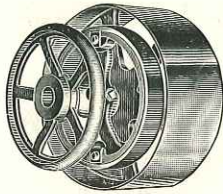
Cut from selected hides by improved machinery, insuring uniformity. Shipped from factory.

No. 47A4585 50-Foot 1/4-Inch Rawhide Lacing for 2 to 4-inch belts. Price..... 40c

No. 47A4586 50-Foot 1/2-Inch Rawhide Lacing for 6 to 8-inch belts. Price..... 69c



SEARS, ROEBUCK AND CO., CHICAGO, ILLINOIS



Friction Clutch Pulleys.

Used in place of the regular pulley on a gasoline engine, so that you do not have to throw the belt on and off. You can start the engine independent of the machinery; after the engine is running, by simply pushing in on the hand wheel, which is stationary, you start the machinery, which saves wear and tear on the engine as well as the machinery and makes it much easier to start your engine.

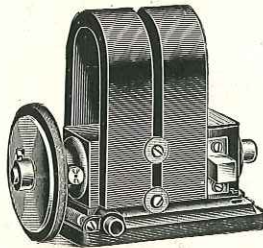
NOTE—When clutch pulley is ordered with engine, the regular pulley is omitted. We furnish clutch pulleys for Economy Engines only.

PRICES FOR FRICTION CLUTCH PULLEYS.

No. 47A4519

Size, Inches	Weight, Pounds	Price	Size, Inches	Weight, Pounds	Price
8x4½	40	\$ 7.35	16x6	100	\$14.00
10x4½	50	7.75	18x6	125	15.00
10x6	50	8.75	20x6	150	16.25
12x4½	50	9.00	22x6	175	17.25
12x6	50	9.95	24x6	200	17.50
14x4½	60	10.20	26x6	225	18.00
14x6	75	11.50	28x6	250	21.50
16x4½	85	12.50	30x6	275	23.50

The Remy Magneto.



A magneto is a small electrical generator to be used with a gasoline engine to furnish the spark. You use batteries to start the engine; after it is running you change to the magneto, which saves the battery and reduces your ignition expense.

The Remy Magneto is well known all over the country. It is acknowledged as being equal to the best magnetos made. We recommend its use with any gasoline engine. Shipped on sixty days' trial; fully guaranteed.

PRICES.

No. 47A4592 Remy Make and Break Magneto only. Weight, 15 pounds. Price.....\$7.95

No. 47A4593 Remy Make and Break Magneto with coil. Weight, 18 pounds. Price..... 9.20

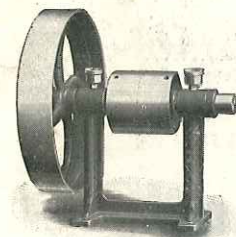
Barrel Churn Attachment.



Run your churn with a gasoline engine. Any hand driven barrel churn can be changed into a power churn by the use of this simple attachment. It consists of a tight and loose pulley on a shaft and can be easily attached to the side of the churn. Fully guaranteed. Shipped on sixty days' trial.

No. 47A4605 Barrel Churn Attachment, tight and loose pulley, 12-inch diameter, 2¼-inch face. Weight, 25 pounds. Price.....\$1.95

Jack Shaft.



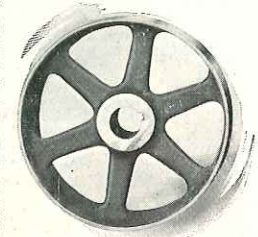
This jack shaft or countershaft is to be used in connection with line shafting for increasing or decreasing the speed of machines that cannot ordinarily be driven by pulleys direct from the main line shaft. To be used on light machines, such as grindstones, churns, emery wheels, etc. Fitted regularly with 12-inch diameter by 2-inch face single pulley and two 4-inch diameter by 2-inch face pulleys to run tight and loose. To increase the speed of a machine, belt from the line shaft to the small pulleys and from the large pulley to the machine. To decrease the speed of

a machine, belt to the large pulley from the line shaft and from the small pulleys to the machine. Shipped on trial. Guaranteed against defect. Weight, 50 pounds.

No. 47A4620 Jack Shaft. Price.....\$2.75

Regular Pulleys for Economy Gasoline Engines.

Belt pulleys for transmitting the power from the engine to the machine or the line shaft should be of a certain size on each engine to give the best results. The pulleys furnished on the Economy Engines are standard and should not be changed unless absolutely necessary. High speed work, such as feed grinding, wood sawing, driving an emery wheel, etc., requires a large pulley to get the necessary speed. In such cases a large pulley should be used. If you are not sure as to the size pulley to use, send in your order just the same, tell us what you want to do and we will see that you get the right size.



PRICES FOR CAST IRON ENGINE PULLEYS.

No. 47A4560

Size, Inches	Weight, Pounds	Price	Size, Inches	Weight, Pounds	Price
4x 4	9	\$0.55	16x10	50	\$2.25
6x 4	10	.70	18x 6	40	1.25
6x 6	12	.80	18x 8	42	1.30
8x 4	13	.85	18x10	55	1.65
8x 6	15	.90	18x12	60	1.80
10x 4	17	1.00	20x 6	47	1.40
10x 6	18	1.15	20x 8	55	1.65
12x 4	19	1.20	20x10	75	2.00
12x 6	22	1.30	22x 8	55	1.65
14x 4	31	1.50	22x 8	65	1.85
14x 6	36	1.60	22x10	85	2.25
14x 8	38	2.00	24x 8	90	2.30
16x 4	40	1.80	26x 8	110	2.65
16x 6	42	2.00	28x 8	125	2.95
16x 8	49	2.15	30x 8	140	3.15

Stand-By Multiple Battery.

We highly recommend the use of the Stand-By Multiple Battery with any gasoline engine. It will give a good fat spark, and on account of its perfect construction, if properly taken care of, will last five times as long as the ordinary dry cells and is in a great many ways equal to if not better than the storage battery or high speed magneto. It is absolutely waterproof and requires very little care. Shipped on ten days' trial. Fully guaranteed.



PRICES FOR STAND-BY MULTIPLE BATTERIES.

No. 47A256 Stand-By Multiple Battery only. Weight, 40 pounds. Price.....\$4.00

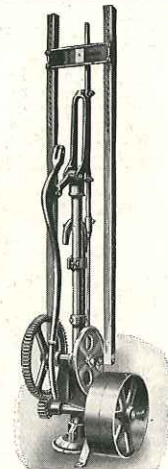
No. 47A256A Stand-By Multiple Battery with coil for make and break ignition. Weight, 45 pounds. Price 5.50

Economy Back Geared Pump Jack.

The Economy Back Geared Pump Jack may be used on any ordinary windmill, hand or force pump. It is back geared 4 to 1 and has three strokes: 5-inch, 7½-inch and 10-inch. It is furnished with tight and loose pulleys 13 inches in diameter for 2-inch belt, and should run at about 160 turns per minute, running pump about thirty-nine strokes per minute. A 2-inch belt is sufficient for raising water with a 3-inch cylinder on the 5-inch stroke 200 feet, on the 7½-inch stroke 150 feet and on the 10-inch stroke 100 feet. With a 2-inch cylinder this jack will handle a well 300 feet deep.

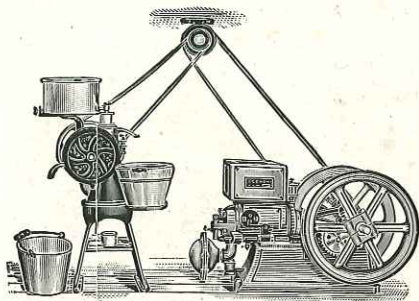
We guarantee these pump jacks to be as good as any pump jacks made for light work.

No. 47A4553 Economy Pump Jack. Weight, 80 pounds. Price.....\$4.75



ALL ITEMS SHOWN ON THIS PAGE ARE SHIPPED FROM OUR FACTORY AT SPARTA, MICH.

SEARS, ROEBUCK AND CO., CHICAGO, ILLINOIS



Showing Governor Pulley Connected Ready to Run.

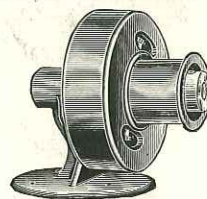
RUN YOUR CREAM SEPARATOR WITH A GASOLINE ENGINE

Don't run the separator by hand, it is hard work. A gasoline engine will do it for you with the aid of a clutch pulley on the separator and a governor pulley fitted up as shown in the illustration to the left.

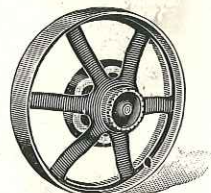
You cannot run a cream separator direct from a gasoline engine. You must have some means of reducing the engine speed and taking care of the fluctuation in speed and the vibration.

A cream separator run by a gasoline engine using an Economy Governor Pulley will give you better results than if run by hand; it will skim the milk cleaner, allowing less waste. The additional profit to you will very soon pay for the cost of the pulleys.

An Economy Governor Pulley furnished with a stand, as shown in the upper right hand corner, is to be used as shown in the illustration where the separator is the only machine you have to run. If you want to run separator from a line shaft, order our



The Governor Pulley With Stand.

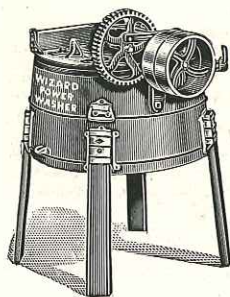


The Clutch Pulley for Separator.

No. 47A4502 Economy Governor Pulley without stand. If you wish to change cream separator from hand to power driven machine, be sure to order cream separator clutch pulley, as shown to the right. Both pulleys shipped on sixty days' trial; guaranteed against defect. Full instructions sent with governor pulley, telling how to adjust for proper speed.

PRICES	
No. 47A4501 Economy Governor Pulley with stand. Shipping weight, 36 pounds.	
Price	\$6.75
No. 47A4502 Economy Governor Pulley without stand for use on $\frac{3}{4}$, $\frac{7}{8}$, 1, $1\frac{1}{4}$ to $1\frac{1}{2}$ -inch line shaft. Be sure and give size of shaft. Shipping weight, 22 pounds. Price.....	\$5.75
No. 47A4503 14-Inch Separator Clutch Pulley for Economy Chief Separators only. Weight, 20 pounds. Price.....	\$2.25
NOTE—Economy Governor Pulley can be used in connection with any separator or any engine.	

WASHING MACHINES TO BE RUN BY GASOLINE ENGINE



The Wizard Power Washing Machine is a development of our High Speed Wizard Hand Washing Machine which has proven to be the most successful rotary type of washer on the market.

All gears are extra heavy, made up of best quality castings. Has tight and loose pulleys, 8 inches in diameter, $\frac{2}{4}$ -inch face, and should be driven at 180 to 215 revolutions per minute.

Tub is first quality white cedar, $21\frac{3}{4}$ inches in diameter at top, $22\frac{3}{4}$ inches in diameter at bottom and 12

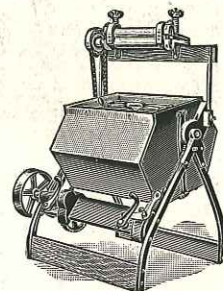
inches deep, inside measurements. Sixty days' trial. Satisfaction guaranteed. Shipped from factory in Chicago.

No. 44A7537 Wizard Power Washer. Weight, 125 pounds. Price..... \$9.70

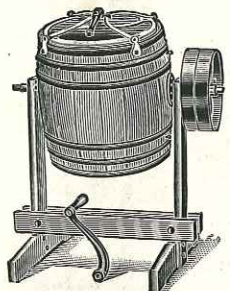
The Foster Power Washing Machine and Wringer is of the latest and most efficient type, and as the non-rusting metal tub has absolutely nothing inside of it, you can wash anything from the finest of laces to the heaviest blankets with perfect safety.

Construction is first class throughout; frame of steel; gears of smooth high grade castings on cold rolled steel shafts. Movement of tub and wringer is controlled by separate clutches, so no loose pulley or belt shifting is needed and one can be run without the other. Pulley is 8 inches in diameter, $\frac{2}{2}$ -inch face and should be driven at 150 revolutions per minute. Sixty days' trial. Satisfaction guaranteed. Shipped from factory in Chicago.

No. 44A7539 Foster Power Washing Machine. Weight, 160 pounds. Price..... \$19.95



"SUCCESS" POWER BARREL CHURN, \$6.20.



Up to date dairymen and farmers are always on the alert to improve their facilities and lighten their burden. Most modern farms and dairies now have power available to do the work quicker and better than by hand.

Our Success Power Barrel Churn will fill a long felt want. It will be welcomed by the multitude of dairymen who heretofore have used hand churns, because a power churn is a time and labor saver and our Success Power Churn is equal to the very best churns now on the market.

Well made of seasoned selected oak, varnished natural color. Hoops painted to prevent rust. Tight fitting cover will not leak. Frames made extra strong. Full directions furnished. Has 12-inch tight and loose pulleys, suitable for any kind of belt power.

No. 9A29195	Capacity, 15 gals.	Churns 1 to 7 gals..	\$6.20
No. 9A29196	Capacity, 20 gals.	Churns 2 to 9 gals..	6.60
No. 9A29197	Capacity, 25 gals.	Churns 2 to 12 gals..	7.10
No. 9A29198	Capacity, 35 gals.	Churns 3 to 16 gals..	7.70

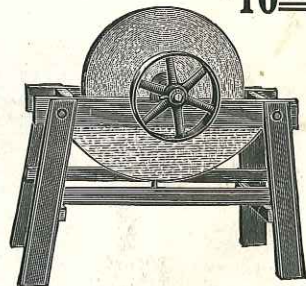
Upon request we will quote prices on larger sizes.

"QUICK AND EASY" POWER GRIND-STONE. \$10⁵⁰

The increasing use of power on the farm and in the shop makes a power grindstone an everyday necessity. Our prices are exceptionally low and will save you money in comparison with other makes.

The Quick and Easy is designed along the best mechanical lines. Shaft carrying the stone and pulley is 1 1/2-16-inch cold rolled steel. Bearings are babbit, made in two pieces, designed to take up wear.

Frames are made of thoroughly seasoned wood, painted red. Stone is the well known Berea grit. Water is carried in galvanized iron reservoir underneath stone. Length of frame, 3 feet 5 1/2 inches; width, 1 foot 7 1/2 inches over all; height of Nos. 1 and 2, 2 feet 3 inches; Nos. 3 and 4, 2 feet 4 inches. Pulley, 12x3 inches.



No. 9A58762	No. 1 Stone, 24x2 inches.	Price.....	\$10.50
	No. 2 Stone, 24x3 inches.	Price.....	11.00
	No. 3 Stone, 26x2 inches.	Price.....	11.50
	No. 4 Stone, 26x3 inches.	Price.....	12.00

SEARS, ROEBUCK AND CO., CHICAGO, ILLINOIS



F. J. HEIM.

Sears, Roebuck and Co., Chicago, Ill.

Gentlemen:—The 8-horse power Economy Engine I bought some time ago of you I must say is good. I am running a 28-inch cylinder threshing machine with a 16-foot straw carrier and the engine is only playing with the machine and uses from 4 to 5 gallons of gasoline in ten hours for running this machine. I am also running a feed grinder, sawing wood, sawing shingles, shredding corn fodder. The engine is easy to start and I recommend the Economy Gasoline Engine as a good engine. It has the least machinery and can be run in any kind of weather. I saved over \$75.00 by purchasing an Economy engine from your house.

Yours very truly,
F. J. HEIM.

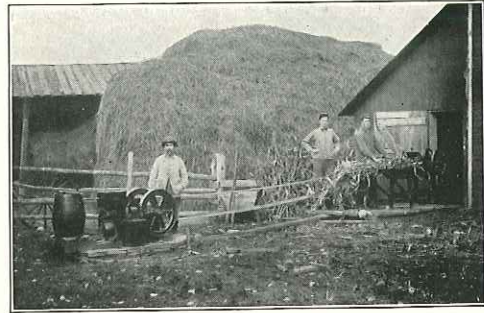
Auburn, Penna.

Thorp, Wis.

Sears, Roebuck and Co.,
Chicago, Ill.

Gentlemen:—I have used my 4-horse power Economy Gasoline Engine every day since I received it. It is always ready to pump water. I also run a knife ensilage cutter and everybody is surprised at the power it develops when hitched to the ensilage cutter or the 23-inch wood saw I use. I have given this engine a good test and feel confident in recommending it to any person as a first class engine. It is the simplest engine I have ever seen. My advice to all is to buy an Economy.

Yours very truly,
JOHN B. LANDRY.



JOHN B. LANDRY.

R. F. D. No. 5, Box 91, Pelican Rapids, Minn.

Sears, Roebuck and Co., Chicago, Ill.

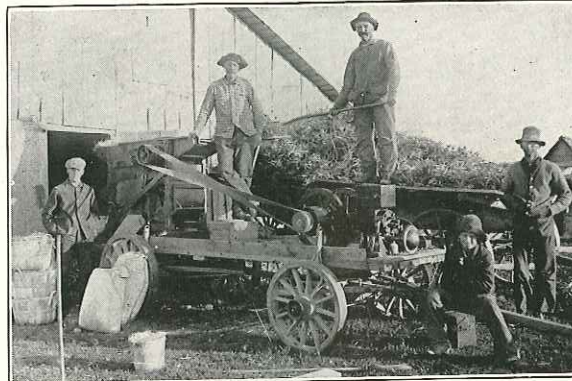
Dear Sirs:—Maybe it will interest you to see what can be done with the Economy Gasoline Engine I bought of you. I saved twelve loads of green poplar wood and four loads of hard oak, some quite big. All this was sawed with the 2-horse power gasoline engine in four hours and forty minutes. My profit was \$3.75 for the job. There were four men besides myself and they had all they could do to furnish the wood. I can saw just as fast with this one as another man near here with an F. M. Engine that cost \$135.00, nearly three times as much as mine. I am going to sell this engine and get one of your 4 or 8-horse power engines and a 30-inch cord wood saw, but I have so much sawing now that I cannot take time to rig one up, so I must use this one this spring, but after the sawing is done I will send for one and rig it up for the summer time, as there is a lot of sawing done in the woods during the summer time.

Yours truly,
B. M. THORSON.

R. F. D. No. 1, Summit City, Mich.
Sears, Roebuck and Co., Chicago, Ill.

Gentlemen:—The picture which I sent you shows the 2-horse power Economy Gasoline Engine which I bought of you running a 12x12 bean huller. Will say that the Economy Engine is all that you claim for it. It is a high grade engine and the cheapest I could buy. My local dealer wanted \$87.00 for a 1-horse power engine and \$125.00 for a 2-horse power engine. When I want another engine I will surely buy the Economy as it is all right. Am very well satisfied with my purchase.

Yours respectfully,
A. E. BRYANT.



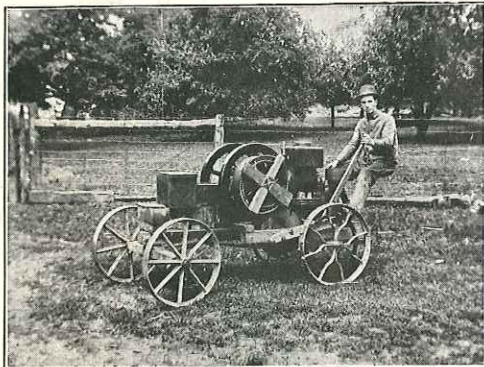
A. E. BRYANT.

R. F. D. No. 1, Lisbon, Ohio.

Sears, Roebuck and Co., Chicago, Ill.

Dear Sirs:—I like my Economy Gasoline Engine all right; I have never had any trouble whatever with it. I think a great deal of it. It is as good as other engines that sell for two times your price. It is easy to operate. I grind feed, cut fodder mostly, saw some wood, too. I think it is a labor saver. I would recommend an Economy Engine to anyone wanting a reliable power.

Yours truly,
S. D. BAILEY.



S. D. BAILEY.

Sears, Roebuck and Co., Chicago, Ill.

Gentlemen:—The engine works fine. I run it all day steadily with no trouble whatever from it. No engine could work any nicer no matter what the cost. If I hadn't known, from past experience, that the engine would be just what you said it was, I would have been afraid to buy it without seeing it, as the price was so much less than others asked, but I sent on the catalog price and got back \$3.00 with notice that the price had been reduced. There are three different parties here who talk of buying an engine in the near future and they all talk favorably of buying one of your engines after seeing mine work. I shall recommend the engine to anyone who inquires, as also the firm of Sears, Roebuck and Co. to deal with.

Yours truly,

W. D. THROOP,
Prop. Utility Glove Works.

Bantam, Conn.

Baileyville, Kan.
Sears, Roebuck and Co., Chicago, Ill.

Dear Sirs:—I am very thankful for the Economy Gasoline Engine that I received from you. I have saved 50 per cent by ordering from you. It is just as good as any gasoline engine that is made. I run a feed mill, pump, cream separator, a two-hole corn sheller and everything that can be done on a farm with an engine. I can save a great deal of time, trouble and work with the Economy Gasoline Engine. It beats all horse powers and windmills that are used on the farm, and I will say that anyone that wants an engine and gets an Economy will get a good one.

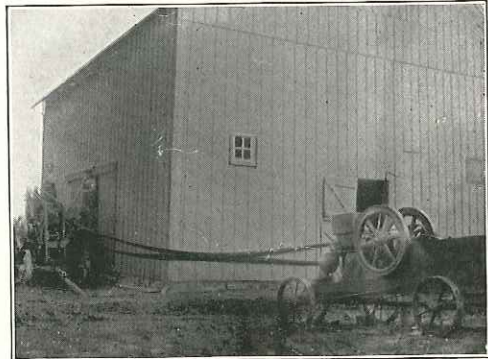
Yours truly,
FRANK MACKE.

R. F. D. No. 1, Cooksville, Ill.
Sears, Roebuck and Co.,

Chicago, Ill.

Gentlemen:—I have received the 6-horse power Economy Engine. I put it to work on a Champion baler and I can bale over 20 tons of straw per ten hour day with it. I believe it is more than 6-horse power and I would not trade it for either of the engines costing over \$200.00 here.

F. J. BRUMME.



F. J. BRUMME.

SEARS, ROEBUCK AND CO., CHICAGO, ILLINOIS



CHAS. AABERG.

Box 117, Maza, No. Dak.
Sears, Roebuck and Co.,
Chicago, Ill.
Gentlemen:—Here is a picture of my Economy Engine sawing wood. It is the only engine for me.
Yours very truly,
FRED GEHRES.

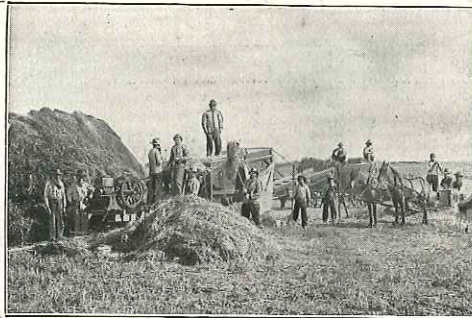


FRED GEHRES.

R. F. D. No. 1, Rothsay, Minn.
Sears, Roebuck and Co., Chicago, Ill.
Gentlemen:—I received your 6-horse power Economy Gasoline Engine in good condition and found it as you represented it to be. I use it for wood sawing and feed grinding. I find it just the size for custom wood sawing. I use a 26-inch saw and it handles it with ease. I enclose snapshot of my sawing outfit.
Yours very truly,
CHAS. AABERG.

Marengo, Ill.
Sears, Roebuck and Co., Chicago, Ill.
Dear Sirs:—The Economy Gasoline Engine I received from you gives perfect satisfaction in every way. Before I ordered the engine I wrote to quite a number of gasoline engine companies for their catalogs to see which was the simplest gasoline engine on the market and after reading their descriptions I came to the conclusion that your engine was the simplest of them all. An engine with many parts is not so long lived and is not so easy to understand as an engine with but few parts. I recommend your Economy Gasoline Engine to anyone, no matter if they have not had experience with gasoline engines before. With your plain instructions anyone can run one of them.
Yours truly,
LOUIS HAUG.

St. Jo, Texas.
Sears, Roebuck and Co., Chicago, Ill.
Sirs:—I write you concerning the 6-horse power Economy Gasoline Engine that I bought from you last spring. I want to say that it has proved to be a much better engine than I expected. Have never had any trouble at all. It runs smooth, pulls well and is easily started. I have been running a 24-inch thresher with 16-foot straw stacker with it and it pulls it with ease. Have choked the thresher but have never pulled the engine down. My neighbors were astonished at so small an engine pulling a thresher. I send you a post card picture of the machine in the field. The thresher and engine are mounted on one truck.
Yours truly,
T. D. BAILEY.

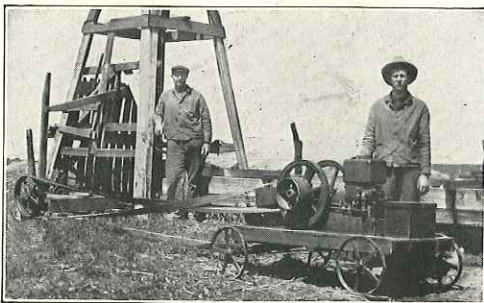


T. D. BAILEY.

Belding, Mich.
Sears, Roebuck and Co., Chicago, Ill.
Dear Sirs:—The gasoline engine that I ordered of you about two months ago came all right. I had it started in about fifteen minutes after getting it home, and it has not bothered me a bit. It starts quick and easy, and I am very well pleased with it, and I am going to keep it. We have always been entirely satisfied with the goods ordered from you. It surely means a great saving. Thanking you for your kind trial offer on the engine, I remain your satisfied customer.
Yours truly,
LEE LUSCOMBE.

Cedar Bluffs, Neb.
Sears, Roebuck and Co., Chicago, Ill.
Dear Sirs:—I like the Economy Gasoline Engine that I got from you very much. It is the best engine that I have ever run. It is the easiest to start and has the best power. I saw wood with a 28-inch saw. I can cut thirty cords of stove wood in ten hours and 2 gallons of gasoline lasts all day. I saw wood, grind feed, pump water and run a feed cutter with my engine. It saves at least one-half of the labor, and I saved about \$60.00 by sending to you for my engine. That is certainly worth saving. The small amount of water that it takes to keep the cylinder cool is a great saving of time. I think every farmer ought to have one of your engines; they are so much better than a windmill.
Yours truly,
W. H. BRUNING.

Waynoka, Okla.
Sears, Roebuck and Co., Chicago, Ill.
Gentlemen:—The little 2-horse power gasoline engine I purchased of you nearly two years ago is still doing duty as good as ever. It has not cost me one cent for repairs and is always ready to go when I turn the crank. It is Economy by name and by nature. It does more work on less gasoline and batteries than any engine of any other make in the neighborhood. I use this engine to churn, wash, separate the cream, turn the grindstone and fanning mill, grind chop meal, etc., pump water when the wind don't blow, run a hay fork and a small grain elevator. The heaviest work I do with it is thresh kafir corn with an Owens No. 4 double cylinder bean huller. This is heavy work, but I can thresh 100 bushels with less than 2 gallons of gasoline and have all the power I need. I saved over \$50.00 by purchasing this engine from your house.
Respectfully,
J. A. GREEN.



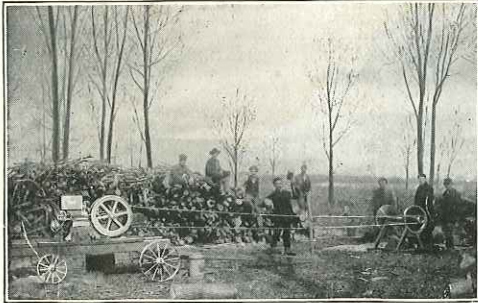
W. H. BRUNING.

Rhame, Texas.
Sears, Roebuck and Co.,
Chicago, Ill.
Gentlemen:—I received your 6-horse power Economy Gasoline Engine. It came in good condition and I found it as you represented it to be. I use it to run one of your corn mills and a 26-inch wood saw. It pulls them nicely. I like the engine better than any engine I ever saw; it has not given a minute's trouble. I saved \$150.00 by buying from you.
Yours truly,
J. H. TROXELL.



J. A. GREEN.

SEARS, ROEBUCK AND CO., CHICAGO, ILLINOIS

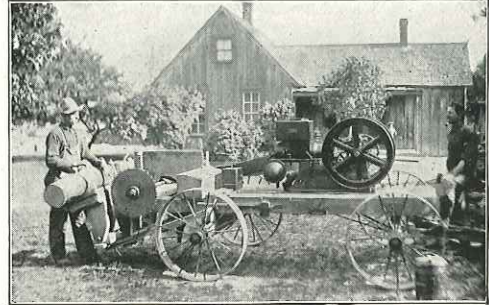


PAUL HEIDEMANN.

Adams, Ore.
Sears, Roebuck and Co.,
Chicago, Ill.

Dear Sirs:—I am well satisfied with the engine I purchased from you. I saved money by buying from you. Your instructions made the engine very easy to start. I think the engine is in every respect what you advertise in your catalog and I can cheerfully recommend it to any of your customers.

Yours very truly,
J. T. LLEUALLEN.



JOSEPH KWIECINSKI.

Sears, Roebuck and Co., Chicago, Ill.

Dear Sirs:—I have saved about \$40.00 by ordering from you. One of my neighbors laughed at me when I told him I had bought a 4-horse power gasoline engine to saw wood with, but now he has changed his mind. When I saved wood for a neighbor of his I sawed seventy-five cords in twelve hours. I got \$10.00 for the job and cleared \$9.25. I have earned the price of the engine and have booked \$40.00 besides. I usually saw by the hour and clear \$6.00 a day. I am also running a 10-inch burr feed grinder, grinding 30 bushels per hour, and also run a corn sheller at the same time. I would recommend the Economy Gasoline Engine to anyone thinking of buying one. This may sound big, but I can prove it to anybody. The engine has caused me no trouble at all in starting. The instructions were very plain. The engine is so simple itself that I learned all about it inside of an hour. The engine is doing just as you claim in your catalog.

Yours truly,
PAUL HEIDEMANN.

Lyndonville, N. Y.

Sears, Roebuck and Co., Chicago, Ill.

Gentlemen:—The 6-horse power Economy Gasoline Engine I bought of you gives me good satisfaction. I run a buzz saw and saw from 25 to 30 cords of wood in a day on 3¼ gallons of gasoline. The Economy Gasoline Engine can be run at a very small cost. I run a 9-inch burr feed grinder and a large feed cutting box. The engine runs all of my machinery and gives plenty of power. It starts very easy in any kind of weather, cold or warm, and the instructions are very simple. I hardly used the instructions to start the engine; the open jacket is the thing, so much better than a large tank. One bucket of water will run all day. I saved from \$50.00 to \$75.00 with it and am perfectly satisfied. We could not purchase a better engine at any price. I would recommend the Economy to any farmer wanting to buy an engine.

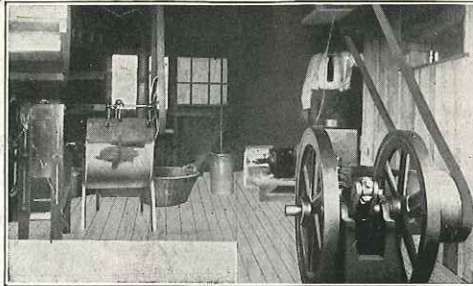
Yours truly,
JOSEPH KWIECINSKI.

R. F. D. No. 1, Box 88, Willis, Mich.

Easton, Mo.
Sears, Roebuck and Co., Chicago, Ill.

Gentlemen:—This is to certify that I have bought an Economy farm gasoline engine, 4-horse power, of you and am well pleased with it. It is all you claim for it. I can recommend the Economy to my friends. I know that I saved at least \$35.00 to \$40.00 by buying my engine of you. My engine is quite a labor saver; it runs a wood saw, a feed grinder, corn sheller, washing machine, churn, grindstone, and when I butcher it turns the sausage mill. I would not be without it for double the price.

Yours respectfully,
FRED SWITZER.



FRED SWITZER.

Route No. 2, Box 19, Bannister, Mich.
Sears, Roebuck and Co., Chicago, Ill.

Sirs:—About two years ago I purchased a 4-horse power gasoline engine from you, and it is as good today as the day I got it. I pump water, grind feed and buzz wood with it. Haven't seen an engine of the same size I would trade it for. It is certainly O. K., and has more power than any engine of its size I ever saw, and is more easily controlled. I saved \$50.00 by buying from you. I would advise anyone wanting an engine to purchase of you.

Respectfully,
WILLIAM TERRELL.

R. F. D. No. 2, Box 61, Bedford, Penn.

Sears, Roebuck and Co., Chicago, Ill.
Gentlemen:—Just a few lines to tell you that I received the 2-horse power Economy Gasoline Engine you sent me in first class condition. I did not have the least bit of trouble to start it. It started right off the first time I tried to start it and has been running just fine ever since. I run a 20-foot line shafting to which I run your Economy Cream Separator, barrel churn and Golden Crown rotary washing machine. I run them all at the same time and the engine runs as easy as when running empty. Your engine is simple in operation. It is like everything else that you sent me (I have ordered something out of each department listed in your catalog), the best money can buy for the least price. An agent for the I. H. Co. asked me \$110.00 for a 2-horse power engine and I only paid \$46.95.

Yours truly,
CHAS. H. PHILLIPS.

Sears, Roebuck and Co., Chicago, Ill.

Gentlemen:—This is a picture of the sawing outfit I bought from you two years ago. The first man on the right is myself, the next is Mr. H. C. Boubaker, then Mr. Henry Bradley, then Mr. H. Howe and then Mr. Calderson. This picture was taken at Albert Woolbridges'. All the men represented are wearing Sears, Roebuck and Co.'s clothing and the picture was taken with a Sears, Roebuck camera. The engine was running full speed sawing an 18-inch log. I am satisfied with the outfit in every way.

Yours truly,
D. L. COVER.

R. F. D. No. 5, Iuka, Ill.

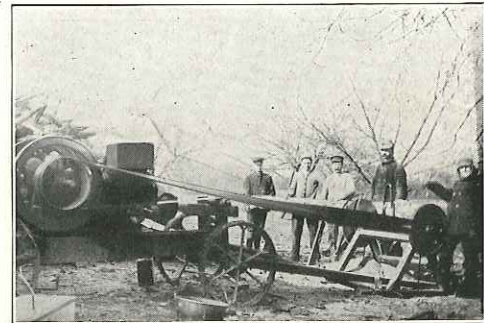


WILLIAM TERRELL.

R. F. D. No. 1,
Butte, Neb.
Sears, Roebuck and Co.,
Chicago, Ill.

Dear Sirs:—Some time ago I bought a gasoline engine from you and found it O. K. I run a two-hole corn sheller with it, a small feed grinder, and I also pump water with it. It costs me about 5 cents a week to pump water for about twenty head of stock. I would not be without it for twice the price it cost.

Yours truly,
AKE NELSON.



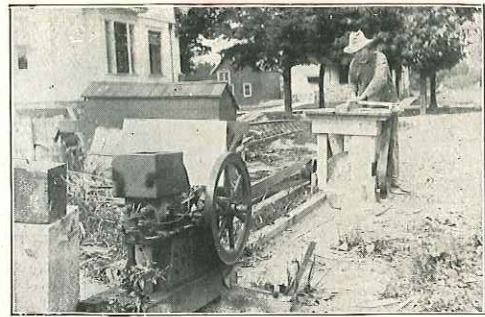
D. L. COVER.

SEARS, ROEBUCK AND CO., CHICAGO, ILLINOIS



W. F. SEIGLER.

Irmo, S. C.
Sears, Roebuck and Co.,
Chicago, Ill.
Gentlemen:—I am sending you a photograph of my engine and No. 3 Farquhar Thresher. I have tried my engine and I cannot say too much about it. To anyone who is going to buy a gasoline engine, I can recommend the Economy for simple construction and being easy to run.
Yours very truly,
W. F. SEIGLER.



G. IRVING TRIPP.

Sears, Roebuck and Co., Chicago, Ill.

Gentlemen:—The Economy Engine that I received from you is working with perfect success. An engine easier to operate cannot be found. It consumes nearly one-half less gasoline than others of the same capacity doing the same work. This has been demonstrated by my using another engine for the same work. My engine is 4-horse power. I operate a 12-inch French burr grinder, a corn sheller, bolter and washing machine, all operating at the same time. Regular work, 10 hours per day. The engine I used prior to using your Economy cost three times as much as yours. I am so well satisfied with results, if my business still holds good I will buy another engine of your make in the spring.
Yours very truly,

JOHN KOMMER.

Monroe, Iowa.

Sears, Roebuck and Co., Chicago, Ill.

Gentlemen:—Enclosed please find a picture of the engine I bought of you in the spring. It is the slickest one I ever had anything to do with. In an hour after it was out of the freight house it was working and has caused me no trouble worth mentioning, only cleaned the rings once and never saw an engine so easy to get at. It has never refused to go yet, it is better than any engine of its size I have seen and I am more than glad I decided to get yours, besides saving at least \$25.00 and having an engine all through. It may interest you to know that the picture was taken with your Model "C" Conley Camera and is in fact a S., R. & Co. picture in every detail. I can find no better goods than yours.
Yours very truly,

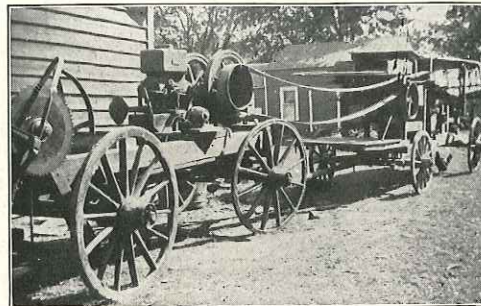
G. IRVING TRIPP.

Box No. 16, Bergen, N. Y.

New Paltz, N. Y.

Sears, Roebuck and Co., Chicago, Ill.
Gentlemen:—I have used one of your 4-horse power Economy Engines for the past three years with the very best results. This engine has worked hard winter and summer for the above length of time up to the present. I have paid 85 cents for repairs and it is today in good working condition. I have used the 6-horse power I ordered from you a short time ago and am well pleased with the same. I am sending you a picture of the 4-horse power engine belted to the cleaner. It has run for the past three falls. This engine also runs a stalk cutter, feed mill, 22-inch rip saw, 22-inch cut off saw. It has done the work on my 160-acre farm and earned me hundreds of dollars in working for others.
Yours very truly,

LEWIS CANFIELD.



LEWIS CANFIELD.

R. F. D. No. 2, Clinton, Ill.

Sears, Roebuck and Co., Chicago, Ill.
Gentlemen:—The 6-horse power Economy Engine ordered from you came to hand on the 4th. I have it installed on a concrete foundation and it is working fine. I am more than pleased with it. You have made a wonderful improvement in eighteen months in the engine business. I can say I certainly like the 6-horse power engine. Have had very little trouble so far. It pulls the grinder, making corn meal as fine as you get in your market. I have my machines so arranged that I can run them all at once if I wish. Your engines are worth the money to any farmer. I have never made the water boil in my engine yet and have run it seven hours without stopping. Anyone desiring to buy an engine will save money by purchasing from you.
Yours very truly,

VERVEN BRADEN.

Sears, Roebuck and Co., Chicago, Ill.

Gentlemen:—The 4-horse power Economy Engine and centrifugal pump purchased of you last March were installed by my son, who had never before seen an engine, and started up by him, and everything moved off like a charm and has worked without trouble ever since, irrigating alfalfa, garden and other truck patches. I saved at least \$100.00 by buying an Economy Engine and pump from you. For simplicity and solidity of construction I do not believe the Economy has a superior, and this was the verdict of many who watched it in action, some of whom owned engines of other makes. I am much pleased with the outfit and am satisfied you will receive some orders from this valley this year.
Yours truly,

A. S. WESTMORELAND.

Valley Center, Cal.

Sears, Roebuck and Co., Chicago, Ill.

Gentlemen:—Referring to the Economy Gasoline Engine of 4-horse power which I purchased of you and of which I was somewhat skeptical as to its being what I wanted, because it seemed too cheap to be reliable, costing but half as much as any engine of similar capacity that I know of, and as I stated in a letter to you that I would try it thirty days and then report results, am well pleased to tell you that after sixty days, during which time I have quite thoroughly tested the engine, I consider it a "dandy" and expect to keep it and wear it out. After the engine was uncrated it was running in five minutes' time, and in my judgment, for simplicity of construction, easy running and evenness of speed, it is hard to beat. I have been the owner of and have had in daily operation, gasoline engines of other makes for the last sixteen years.
Yours truly,

L. P. JENSEN.

Rock Falls, Ill.

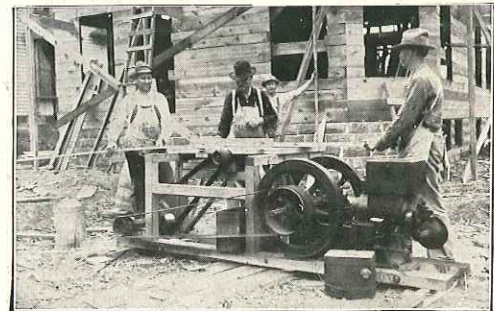


A. S. WESTMORELAND.

Homestead, Fla.

Sears, Roebuck and Co.,
Chicago, Ill.
Gentlemen:—I use my engine and pump for filling a 20,000-gallon concrete swimming pool and irrigation storage tank. The source of supply is a 3-inch drilled well, 14 feet deep, in porous limestone rock in which the normal water level is 7 feet below the surface of the ground and the top of pool is 3 feet above the ground—making a total lift of 10 feet. Engine and pump are working very satisfactorily and require but five hours to fill the pool (20,000 gallons).
Yours very truly,

GEO. S. McCLURE.



L. P. JENSEN.

SEARS, ROEBUCK AND CO., CHICAGO, ILLINOIS

Freight Rate for Each 100 Pounds on Gasoline Engines Shipped From Our Factory at Sparta, Michigan, to Different Points Throughout the United States

To find out just what the freight will be on an engine to your town, look up the state in which you live in the following list, get the rate for 100 pounds to the town nearest you, and multiply it by the weight of the engine or outfit you want to buy. You can then add the amount to the cost of the engine and make comparison with prices charged in your own town. If you want to know what the charges will be from one of our warehouses, write and tell us what engine you want and we will tell you just what it will cost.

ALABAMA—		KENTUCKY—		NORTH DAKOTA—	
Birmingham	\$1.16	Frankfort	\$0.63	Bismarek	\$1.66
Brewton	1.15	Hopkinsville	.82	Fargo	1.33
Mobile	.79	Louisville	.38	Grand Forks	1.33
Montgomery	1.25	Morehead	.62	Minot	1.81
				Williston	2.05
ARIZONA—		LOUISIANA—		OHIO—	
Phoenix	3.05	Lake Charles	1.80	Cincinnati	.37
Tucson	3.05	New Orleans	.79	Columbus	.35
		Shreveport	1.65	Toledo	.29
ARKANSAS—		MAINE—		OKLAHOMA—	
Arkansas City	1.19	Bangor	.69	Oklahoma City	1.70
Fort Smith	1.50				
Hot Springs	1.75	MARYLAND—		OREGON—	
Little Rock	1.29	Baltimore	.60	Portland	3.50
Texarkana	1.67				
CALIFORNIA—		MASSACHUSETTS—		PENNSYLVANIA—	
Bakersfield	3.50	Boston	.69	Harrisburg	.60
Los Angeles	3.50			Philadelphia	.61
San Francisco	3.50	MICHIGAN—		Pittsburgh	.39
		Bessemer	.66		
COLORADO—		Detroit	.29	RHODE ISLAND—	
Denver	2.02	Grand Rapids	.19	Providence	.69
Durango	3.42	Traverse City	.25		
Grand Junction	3.42			SOUTH CAROLINA—	
Julesburg	1.95	MINNESOTA—		Charleston	1.12
Leadville	3.02	Aitkin	1.04	Greenville	1.23
		Crookston	1.33	Sumter	1.21
CONNECTICUT—		Duluth	.66		
Hartford	.69	Grand Rapids	.99	SOUTH DAKOTA—	
		Minneapolis	.66	Aberdeen	1.43
DELAWARE—		Winona	.65	Bellefourche	2.15
Dover	.63			Sioux Falls	1.03
		MISSISSIPPI—		Watertown	1.15
DISTRICT OF COLUMBIA—		Hattiesburg	1.20		
Washington	.60	Jackson	1.05	TENNESSEE—	
		Natchez	.79	Jackson	.87
FLORIDA—		MISSOURI—		Knoxville	.94
Jacksonville	1.12	Kansas City	.95	Memphis	.59
Miami	1.92	St. Louis	.40	Nashville	.65
Pensacola	.79	Springfield	1.02		
Tallahassee	1.50			TEXAS—	
		MONTANA—		El Paso	1.99
GEORGIA—		Helena	2.91	Fort Worth	1.87
Atlanta	1.15	Kalispell	3.02	Houston	1.87
Macon	1.18				
Savannah	1.12	NEBRASKA—		UTAH—	
Waycross	1.44	Lincoln	1.00	Marysvale	3.17
		North Platte	1.73	Salt Lake City	2.77
IDAHO—		Omaha	.95		
Boise	3.08	NEVADA—		VERMONT—	
Pocatello	2.80	Austin	3.80	Montpelier	.69
		Carson City	3.30		
ILLINOIS—		NEW HAMPSHIRE—		VIRGINIA—	
Cairo	.45	Concord	.69	Marion	.70
Joliet	.27			Richmond	.60
Rock Island	.50	NEW JERSEY—		Rocky Mount	.82
Springfield	.40	Atlantic City	.68		
		Trenton	.63	WASHINGTON—	
INDIANA—		NEW MEXICO—		Seattle	3.50
Evansville	.39	Gallup	3.05	Spokane	3.05
Fort Wayne	.30	Santa Fe	2.52		
Indianapolis	.34	Silver City	2.60	WEST VIRGINIA—	
Richmond	.34			Charleston	.44
South Bend	.27	NEW YORK—		Elkins	.60
		Albany	.60	Wheeling	.39
IOWA—		Buffalo	.39		
Des Moines	.77	New York	.63	WISCONSIN—	
Fort Dodge	.89	Syracuse	.50	Ashland	.66
Sioux City	.95			La Crosse	.65
		NORTH CAROLINA—		Madison	.65
KANSAS—		Raleigh	1.01	Marinette	.66
Dodge City	1.81	Wilmington	.90	Milwaukee	.32
Great Bend	1.67				
Kansas City	.95			WYOMING—	
Topeka	1.29			Cheyenne	2.02
Wichita	1.59			Green River	2.82
				Lander	3.16
				Sheridan	2.72

SEARS, ROEBUCK AND CO., CHICAGO, ILLINOIS

*If all advertised horse power were real, or if the real horse
power of all engines were advertised, some engines
or some advertisements would have to be different.
Many people have tested the Economy Engines.
They will tell you from their own experience
that there is ONE engine that actually
delivers ALL the power claimed for
it by its makers, all the time,
and sometimes more. Get
REAL power when you
buy "horse" power.
Buy an Economy*



SEARS, ROEBUCK AND CO., CHICAGO, ILLINOIS.



SEARS ROEBUCK & CO.
CHICAGO